

# GENWEC<sup>®</sup>

WASHROOM EQUIPMENT & COMP.



Tarifa de Precios

*Price List*

3.2



**Genwec Exportación / Genwec Export**  
export@genwec.com

**Administración / Accounting**  
+34 93 298 80 02

**GENWEC Business Whatsapp**  
+34 617 38 45 13

**Horario Comercial / Business Hours**  
8:30h - 13:30h / 15:00h - 18:00h

**Genwec España / Genwec Spain**  
www.genwec.com  
comercial@genwec.com

Tel: +34 93 601 80 40 Fax: +34 93 601 80 41

## **GENWEC WASHROOM, S.L.**

**Genebre Group**  
Avinguda Joan Carles I, 46 - 48  
08908 L'Hospitalet de Llobregat, Barcelona (Spain)

**Almacén / Warehouse**  
Carrer de la Botànica, 168 - 170  
08908 L'Hospitalet de Llobregat, Barcelona (Spain)  
Telf: +34 93 318 31 13

Nuestra empresa Our company

# GENWEC

**Soluciones para áreas públicas dirigidas al arquitecto, diseñador y promotor.**

*A complete solution for public areas addressed to architects, designers and developers.*

En GENWEC contamos con un servicio integral de principio a fin. Diseñamos, producimos y comercializamos una amplia gama de productos para áreas y baños públicos. Controlamos todas las fases del proceso productivo para garantizar una calidad superior a las exigencias del mercado. Contamos con un gran stock para garantizar plazos de entrega inmediatos y servicio postventa personalizado. Ofrecemos un soporte de asesoramiento completo para nuestros clientes, arquitectos, ingenierías, prescriptores en general.

GENWEC pertenece al GRUPO GENEBRE. Un grupo líder en la producción y distribución de válvulas y accesorios para el control de fluidos. Con 40 años de experiencia y un equipo humano altamente cualificado formado por aproximadamente 180 personas en nuestras instalaciones de Barcelona y filiales en Europa, América y Asia, nuestro producto es comercializado en 110 países.

At GENWEC we rely on an integral service from beginning to end. We design, produce, and commercialize a big range of products intended for public and washroom areas. We control all phases of production process to guarantee a superior quality to market requirements. We count on a large stock of finished product to be able to guarantee immediate delivery times and a personalized aftersales service. We offer a complete advice support to our customers, architects, engineering, and prescribers.

GENWEC belongs to GENEBRE GROUP. A leader group in the production and distribution of valves and accessories for fluid control. With 40 years of experience and a high qualified human team of approximately 180 persons in our headquarters in Barcelona and subsidiaries in Europe, America and Asia, our product is commercialized in 110 countries.





### Airports

- Madrid Barajas Airport, Madrid (Spain)
- Josep Tarradellas Airport, Barcelona (Spain)
- La Coruña Airport, A Coruña (Spain)
- Umberto Delgado Airport, Lisboa (Portugal)



### Business Center

- Skycity Business Center, Mérida (Mexico)
- Centro Inter. de Congresos, Merida (Mexico)
- Centris Iasi, Iasi (Romania)
- Telus Tower, Sofia (Bulgaria)



### Malls/Shopping Centers

- Lavina Shopping Center, Kyiv (The Mall)
- The Mall Shopping Complex, Doha (Qatar)
- Dubai Hills Mall, Dubai (UAE)
- C.C. Torrecardenas, Almería (Spain)



### Hospitals

- Banco de Seguros, Montevideo (Uruguay)
- King's College Hospital, Dubai, (UAE)
- Hospital Provincial de Zamora, Zamora (Spain)
- Hospital IMED Valencia, Valencia (Spain)



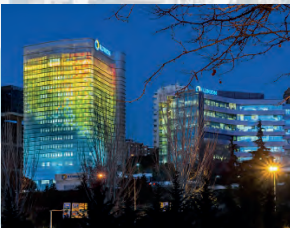
### Stadiums

- Dagály Aquatics Complex, Budapest (Hungary)
- Gran Parque Central, Montevideo (Uruguay)
- Puskás Arena, Budapest (Hungary)
- Estadio Municipal de Ipurua, Eibar (Spain)



### Hotels

- Grand Sirenis Riviera Maya Resort & Spa, Riviera Maya (Mexico)
- Hotel Four Seasons, Madrid (Spain)
- Movenpick Hotel, Riyadh (Saudi Arabia)
- Eden Beach Resort, Anavyssos (Greece)



### Offices/Headquarters

- Opel Szentgotthárd factory, Szentgotthárd, (Hungary)
- Oficinas Centrales ILUNION, Madrid (Spain)
- Amazon warehouse, Illescas (Spain)
- Road & Transport Authority, Dubai (UAE)



### Educational Centers

- Campus de Carcavelos, Lisboa (Portugal)
- Facultat de Dret, Barcelona (Spain)
- Universidad de Segovia, Segovia (Spain)
- New Heaven High School, Antofagasta (Chile)



### Others

- McDonalds Restaurants, across Europe
- Cactus Supermarche, across Luxembourg
- Primark Arese Shopping Center, Arese (Italy)
- Mercadona Supermarkets chain, across (Spain)
- Tabernas Volapie, across Spain

**Oficinas** *Offices*

*Spain, Argentina, Brazil, Uruguay, Asia, Hong Kong.*

# TRATO PERSONAL CON MENTALIDAD GLOBAL

## *PERSONAL TREATMENT WITH A GLOBAL MENTALITY*

**GENWEC apuesta por la internacionalización adaptándose a cualquier necesidad.**

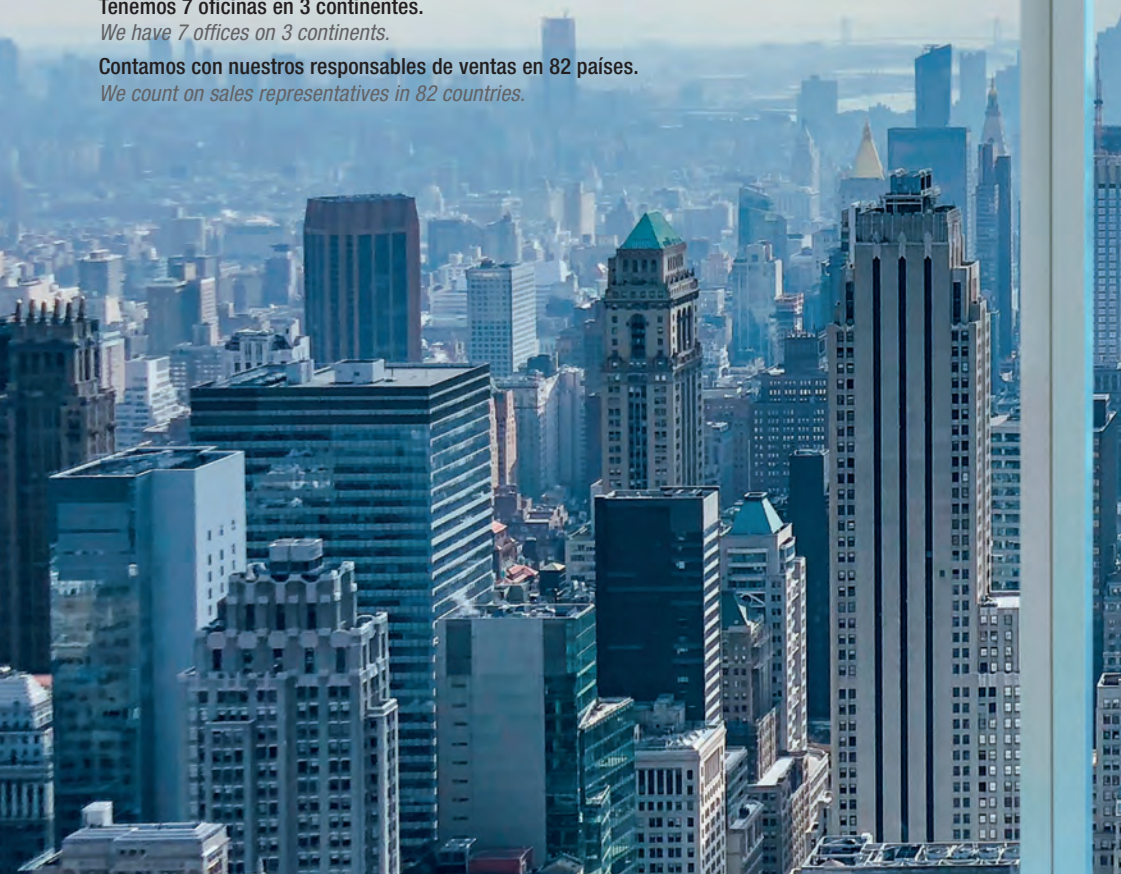
*Genwec is committed to internationalization, adapting to any need.*

**Tenemos 7 oficinas en 3 continentes.**

*We have 7 offices on 3 continents.*

**Contamos con nuestros responsables de ventas en 82 países.**

*We count on sales representatives in 82 countries.*





## Índice | Index

<b>Especial Productos Sin Contacto</b> Non Contact Special Products	3
<b>Especial Productos Acabados Black</b>	4
<b>Secamanos</b> Hand dryer	6
<b>Secadores de pelo</b> Hair dryers	10
<b>Dispensadores de papel</b> Paper dispensers	11
<b>Dosificadores de jabón</b> Soap dispensers	13
<b>Accesorios de baño</b> Washroom accessories	15
<b>Papeleras</b> Wastepaper bins	23
<b>Cambiapañales</b> Baby changing stations	25
<b>Sanitarios acero inoxidable</b> Stainless steel sanitary products	26
<b>Muebles compactos</b> Compact furniture	30
<b>Fuentes de agua</b> Water dispensers	31
<b>Ayudas técnicas a la movilidad</b> Grab bars & technical mobility supports	32
<b>Lavaojos y duchas de emergencia</b> Eye washers & emergency showers	40
<b>Grifería temporizada</b> Timed taps	41
<b>Exterminadores de insectos</b> Insect killers	42



## Especial Productos Sin Contacto

Non Contact Special Products



**NEW**

**Ref. GW01 28 02 00**  
Secamanos Verdedri aluminio blanco  
*Verdedri hand dryer aluminium white*

790,60 €



**NEW**

**Ref. GW01 28 04 01**  
Secamanos Verdedri inox satinado  
*Verdedri hand dryer stainless steel brushed*

939,80 €



**NEW**

**Ref. GW01 28 04 02**  
Secamanos Verdedri inox brillante  
*Verdedri hand dryer stainless steel polished*

939,80 €



**NEW**

**Ref. GW01 28 02 03**  
Secamanos Verdedri aluminio negro  
*Verdedri hand dryer aluminium black*

816,10 €



**NEW**

**Ref. GW01 28 90 01**  
Filtro HEPA Verdedri  
*Verdedri HEPA filter*

98,35 €



**NEW**

**Ref. GW04 17 01 00**  
Dosificador de jabón manual 1000ml  
ABS blanco  
*Manual soap dispenser 1000ml  
ABS white*

16,30 €



**NEW**

**Ref. GW04 15 01 00**  
Dosificador automático en spray  
desinfectante de manos  
*Automatic hand sanitizer dispenser -  
spray*

42,35 €



**NEW**

**Ref. GW04 16 01 00**  
Dosificador automático de jabón/gel  
desinfectante de manos blanco  
1100ml  
*Automatic soap/gel hand sanitizer  
dispenser white 1100ml*

42,35 €



**Ref. GW04 15 01 00SM**  
Stand de sobremesa con dosificador  
automático en spray desinfectante de  
manos negro  
*Automatic hand sanitizer spray  
dispenser with black desktop stand*

66,20 €



**Ref. GW04 16 01 00SM**  
Stand de sobremesa con dosificador  
automático en gel desinfectante de  
manos negro  
*Automatic hand sanitizer gel dispenser  
with black desktop stand*

66,20 €



**Ref. GW04 15 01 00ST**  
Stand con dosificador automático en  
spray desinfectante de manos gris  
*Automatic hand sanitizer spray  
dispenser with grey stand*

163,25 €



**Ref. GW04 15 01 00SN**  
Stand con dosificador automático en  
spray desinfectante de manos negro  
*Automatic hand sanitizer spray  
dispenser with black stand*

163,25 €



**Ref. GW04 15 01 00SB**  
Stand dosificador automático en  
spray desinfectante de manos blanco  
*Automatic hand sanitizer spray  
dispenser with white stand*

163,25 €



**Ref. GW04 16 01 00ST**  
 Stand con dosificador automático en gel desinfectante de manos gris  
*Automatic hand sanitizer gel dispenser with grey stand* 163,25 €



**Ref. GW04 16 01 00SN**  
 Stand con dosificador automático en gel desinfectante de manos negro  
*Automatic hand sanitizer gel dispenser with black stand* 163,25 €



**Ref. GW04 16 01 00SB**  
 Stand dosificador automático en gel desinfectante de manos blanco  
*Automatic hand sanitizer gel dispenser with white stand* 163,25 €



**Ref. GW04 15 01 00SC**  
 Stand con termómetro + dosificador automático en spray desinfectante gris  
*Automatic hand sanitizer spray dispenser + thermometer with grey stand* 294,10 €



**Ref. GW04 15 01 00CN**  
 Stand con termómetro + dosificador automático en spray desinfectante negro  
*Automatic hand sanitizer spray dispenser + thermometer with black stand* 294,10 €



**Ref. GW04 15 01 00CB**  
 Stand con termómetro + dosificador automático en spray desinfectante blanco  
*Automatic hand sanitizer spray dispenser + thermometer with white stand* 294,10 €



**Ref. GW04 16 01 00SC**  
 Stand con termómetro + dosificador automático en gel desinfectante gris  
*Automatic hand sanitizer gel dispenser + thermometer with grey stand* 294,10 €



**Ref. GW04 16 01 00CN**  
 Stand con termómetro + dosificador automático en gel desinfectante de manos negro  
*Automatic hand sanitizer gel dispenser + thermometer with black stand* 294,10 €



**Ref. GW04 16 01 00CB**  
 Stand con termómetro + dosificador automático en gel desinfectante blanco  
*Automatic hand sanitizer gel dispenser + thermometer with white stand* 294,10 €



**Ref. GW04 18 04 02**  
 Dispensador XL a pedal para gel hidroalcohólico  
*XL freestanding pedal hand sanitizer* 655,15 €



**Ref. GW13 49 01 00**  
 Termómetro infrarrojo sin contacto  
*Non-contact infrared thermometer* 91,95 €



**Ref. GW13 50 01 00**  
 Termómetro infrarrojo sin contacto de pared  
*Wall mounted non-contact infrared thermometer* 152,30 €

## Especial Productos Acabados Black



**NEW**  
**Ref. GW03 02 04 03**  
 Dispensador papel jumbo inox 304 negro mate  
*Jumbo paper dispenser 304 stainless steel matt black* 99,75 €

**NEW**

**Ref. GW03 04 04 03**  
 Dispensador papel toalla pequeño  
 inox 304 negro mate  
*Paper towel dispenser small size 304  
 stainless steel matt black*

91,20 €

**NEW**

**Ref. GW03 05 04 03**  
 Dispensador jabón toalla grande inox  
 304 negro mate  
*Paper towel dispenser large size 304  
 stainless steel matt black*

124,60 €

**NEW**

**Ref. GW04 21 04 03**  
 Dosificador jabón mural 1800ml inox  
 304 negro mate  
*Wall mounted dispenser 1800ml 304  
 stainless steel matt black*

102,25 €

**NEW**

**Ref. GW06 14 04 03**  
 Papelera mural inox 304 negro mate  
*Wall mounted paper dispenser 304  
 stainless steel matt black*

158,25 €

**NEW**

**Ref. GW02 08 01 03**  
 Secador de pelo iónico "BISE" negro  
 1800W inox 304 negro mate  
*304 stainless steel matt black ionic hair  
 dryer "BISE" 1800W*

86,60 €

**NEW**

**Ref. GW05 55 04 03**  
 Percha simple inox 304 negro mate  
 "Pompei Series"  
*Hanger 304 stainless steel matt black  
 "Pompei series"*

17,70 €

**NEW**

**Ref. GW05 56 04 03**  
 Vaso simple inox 304 "Pompei Series"  
*Tumbler holder 304 stainless steel  
 "Pompei Series"*

27,25 €

**NEW**

**Ref. GW05 57 04 03**  
 Jabonera inox 304 "Pompei Series"  
*Soap basket 304 stainless steel  
 "Pompei Series"*

42,65 €

**NEW**

**Ref. GW05 58 04 03**  
 Jabonera inox 304 con plato "Pompei  
 Series"  
*Soap dish 304 stainless steel "Pompei  
 Series"*

26,40 €

**NEW**

**Ref. GW05 59 04 03**  
 Dispensador jabón mural inox 304  
 "Pompei Series"  
*Wall mounted soap dispenser 304  
 stainless steel "Pompei Series"*

31,30 €

**NEW**

**Ref. GW05 60 04 03**  
 Jabonera ducha inox 304 "Pompei  
 Series"  
*Shower basket 304 stainless steel  
 "Pompei Series"*

47,00 €

**NEW**

**Ref. GW05 61 04 03**  
 Portarrollos inox 304 "Pompei Series"  
*Paper holder 304 stainless steel  
 "Pompei Series"*

30,40 €

**NEW**

**Ref. GW05 62 04 03**  
 Toallero recto inox 304 "Pompei  
 Series"  
*Straight towel ring 304 stainless steel  
 "Pompei Series"*

32,80 €

**NEW**

**Ref. GW05 63 04 03**  
 Escobillero inox 304 "Pompei Series"  
*Toilet brush holder 304 stainless steel  
 "Pompei Series"*

46,60 €

	<b>NEW</b> <b>Ref. GW05 64 04 03</b> Toallero barra simple inox 304 "Pompei Series" <i>Towel bar 304 stainless steel "Pompei Series"</i>	58,75 €
--	---	---------

	<b>NEW</b> <b>Ref. GW05 65 04 03</b> Toallero barra doble inox 304 "Pompei Series" <i>Double towel bar 304 stainless steel "Pompei Series"</i>	75,35 €
--	---	---------

	<b>NEW</b> <b>Ref. GW05 66 04 03</b> Repisa cristal inox 304 "Pompei Series" <i>Glass shelf 304 stainless steel "Pompei Series"</i>	78,05 €
--	--	---------

	<b>NEW</b> <b>Ref. GW05 67 04 03</b> Toallero repisa inox 304 "Pompei Series" <i>Towel rack 304 stainless steel "Pompei Series"</i>	103,55 €
--	--	----------

	<b>NEW</b> <b>Ref. GW05 30 06 03</b> Espejo con aumento negro <i>Magnifying mirror black</i>	85,55 €
---	---	---------



**Secamanos**  
*Hand dryer*

\*Productos eléctricos sujetos a la tasa de reciclaje.  
*\*Electrical products subject to the rate of recycling*

	<b>NEW</b> <b>Ref. GW01 28 02 00</b> Secamanos Verdedri aluminio blanco <i>Verdedri hand dryer aluminium white</i>	790,60 €
--	---	----------

	<b>NEW</b> <b>Ref. GW01 28 04 01</b> Secamanos Verdedri inox satinado <i>Verdedri hand dryer stainless steel brushed</i>	939,80 €
---	---	----------

	<b>NEW</b> <b>Ref. GW01 28 04 02</b> Secamanos Verdedri inox brillante <i>Verdedri hand dryer stainless steel polished</i>	939,80 €
---	---	----------

	<b>NEW</b> <b>Ref. GW01 28 02 03</b> Secamanos Verdedri aluminio negro <i>Verdedri hand dryer aluminium black</i>	816,10 €
---	--	----------

	<b>NEW</b> <b>Ref. GW01 28 90 01</b> Filtro HEPA Verdedri <i>Verdedri HEPA filter</i>	98,35 €
---	--	---------

	<b>Ref. GW01 02 02 00</b> Secamanos Smartdri PLUS aluminio blanco <i>Smartdri PLUS hand dryer aluminium white</i>	617,70 €
--	---	----------

	<b>Ref. GW01 02 04 01</b> Secamanos Smartdri PLUS acero inoxidable <i>Smartdri PLUS hand dryer stainless steel</i>	718,55 €
---	--	----------

	<b>Ref. GW01 02 04 02</b> Secamanos Smartdri PLUS acero inoxidable <i>Smartdri PLUS hand dryer stainless steel</i>	694,10 €
---	--	----------

**Ref. GW01 02 02 03**

Secamanos Smartdri PLUS aluminio negro  
*Smartdri PLUS hand dryer aluminium black*

619,45 €

**Ref. GW01 03 02 00**

Secamanos Slimdri aluminio blanco  
*Slimdri hand dryer aluminium white*

460,25 €

**Ref. GW01 03 02 01**

Secamanos Slimdri aluminio satinado  
*Slimdri hand dryer aluminium brushed*

539,80 €

**Ref. GW01 03 04 01**

Secamanos Slimdri acero inoxidable  
*Slimdri hand dryer stainless steel*

540,35 €

**Ref. GW01 03 02 02**

Secamanos Slimdri aluminio brillante  
*Slimdri hand dryer aluminium polished*

519,20 €

**Ref. GW01 03 04 02**

Secamanos Slimdri inox brillante  
*Slimdri hand dryer stainless steel polished chrome*

540,35 €

**Ref. GW01 03 02 03**

Secamanos Slimdri aluminio negro  
*Slimdri hand dryer aluminium black*

491,70 €

**Ref. GW01 04 02 00**

Secamanos Airforce aluminio epoxy blanco  
*Airforce hand dryer aluminium epoxy white*

443,75 €

**Ref. GW01 04 02 01**

Secamanos Airforce aluminio satinado  
*Airforce hand dryer aluminium brushed*

505,50 €

**Ref. GW01 04 04 01**

Secamanos Airforce acero inoxidable satinado  
*Airforce hand dryer stainless steel brushed*

556,75 €

**Ref. GW01 04 02 02**

Secamanos Airforce aluminio brillante  
*Airforce hand dryer aluminium polished*

505,50 €

**Ref. GW01 04 04 02**

Secamanos Airforce acero inoxidable brillante  
*Airforce hand dryer stainless steel polished*

556,75 €

**Ref. GW01 04 02 03**

Secamanos Airforce aluminio negro  
*Airforce hand dryer aluminium black*

443,75 €

**Ref. GW01 19 03 00**

Secamanos Model A acero blanco manual  
*Model A hand dryer manual white steel*

417,30 €



**Ref. GW01 19 04 01**

**Secamanos Model A inox satinado manual**

*Model A hand dryer manual stainless steel brushed*

550,45 €



**Ref. GW01 19 04 02**

**Secamanos Model A inox brillante manual**

*Model A hand dryer manual stainless steel polished*

550,45 €



**Ref. GW01 20 03 00**

**Secamanos Model A acero blanco automático**

*Model A hand dryer automatic steel white*

452,00 €



**Ref. GW01 20 04 01**

**Secamanos Model A inox satinado automático**

*Model A hand dryer automatic stainless steel brushed*

584,70 €



**Ref. GW01 20 04 02**

**Secamanos Model A inox brillante automático**

*Model A hand dryer automatic stainless steel polished*

584,70 €



**Ref. GW01 15 01 00**

**Secamanos Bladeflow ABS blanco (sin escobillas)**

*Bladeflow hand dryer ABS white (without brushes)*

950,75 €



**Ref. GW01 15 01 04**

**Secamanos Bladeflow ABS plateado (sin escobillas)**

*Bladeflow hand dryer ABS silver (without brushes)*

997,55 €



**Ref. GW01 15 01 04V1**

1011,10 €



**Ref. GW01 18 04 00**

**Secamanos Bladeflow 2 inox blanca (con escobillas)**

*Bladeflow 2 hand dryer stainless steel white (with brushes)*

950,30 €



**Ref. GW01 18 04 01**

**Secamanos Bladeflow 2 inox satinada (con escobillas)**

*Bladeflow 2 hand dryer stainless steel brushed (with brushes)*

950,30 €



**NEW**

**Ref. GW01 18 04 03**

**Secamanos Bladeflow 2 inox negro (con escobillas)**

*Bladeflow 2 hand dryer stainless steel black (with brushes)*

1013,90 €



**Ref. GW01 12 02 00**

**Secamanos E-flow aluminio blanco**

*E-flow hand dryer aluminium white epoxy*

279,80 €



**Ref. GW01 12 02 00V1**

279,80 €



**Ref. GW01 12 02 04**

**Secamanos E-flow aluminio plateado**

*E-flow hand dryer aluminium silver*

279,80 €



**Ref. GW01 12 02 04V1**

279,80 €



**Ref. GW01 12 02 02**

Secamanos E-flow aluminio brillante  
*E-flow hand dryer aluminium polished chrome*

322,55 €



**Ref. GW01 25 03 00**

Secamanos Classicflow acero blanco automático  
*Classicflow hand dryer steel white automatic*

292,05 €



**Ref. GW01 25 04 01**

Secamanos Classicflow inox satinado automático  
*Classicflow hand dryer stainless steel brushed automatic*

329,15 €



**Ref. GW01 25 04 02**

Secamanos Classicflow inox brillante automático  
*Classicflow hand dryer stainless steel polished automatic*

329,15 €



**Ref. GW01 26 03 00**

Secamanos Classicflow acero blanco manual  
*Classicflow hand dryer steel white manual*

292,05 €



**Ref. GW01 26 04 01**

Secamanos Classicflow inox satinado manual  
*Classicflow hand dryer stainless steel brushed manual*

329,15 €



**Ref. GW01 26 04 02**

Secamanos Classicflow inox brillante manual  
*Classicflow hand dryer stainless steel polished manual*

329,15 €



**Ref. GW01 14 01 00**

Secamanos Wecflow ABS blanco  
*Wecflow hand dryer ABS white*

139,90 €



**Ref. GW01 14 01 00V1**

155,85 €



**Ref. GW01 14 03 00**

Secamanos Wecflow acero epoxi blanco  
*Wecflow hand dryer steel epoxy white*

179,50 €



**Ref. GW01 14 03 00V1**

191,35 €



**Ref. GW01 14 04 01**

Secamanos Wecflow acero inoxidable satinado  
*Wecflow hand dryer stainless steel brushed*

214,00 €



**Ref. GW01 14 04 01V1**

226,20 €



**Ref. GW01 14 04 02**  
 Secamanos Weclflow acero inoxidable  
 brillante  
*Weclflow hand dryer stainless steel  
 polished* 214,00 €



**Secadores de pelo**  
*Hair dryers*

\*Productos eléctricos sujetos a la tasa de reciclaje.  
*\*Electrical products subject to the rate of recycling*



**Ref. GW02 01 01 00**  
 Secador de pelo "BALI" 1200W  
*Hair dryer "BALI" 1200W* 40,20 €



**Ref. GW02 02 01 00**  
 Secador de pelo "PONTIA" 1400W  
*Hair dryer "PONTIA" 1400W* 46,80 €



**Ref. GW02 03 01 00**  
 Secador de pelo "MISTRAL" 1400W  
*Hair dryer "MISTRAL" 1400W* 61,10 €



**Ref. GW02 03 01 00V1** 63,95 €



**Ref. GW02 03 01 03**  
 Secador de pelo "MISTRAL" 1400W  
*Hair dryer "MISTRAL" 1400W* 61,10 €



**NEW**  
**Ref. GW02 08 01 00**  
 Secador de pelo iónico "BISE" blanco  
 1800W  
*Ionic hair dryer "BISE" white 1800W* 81,75 €



**NEW**  
**Ref. GW02 08 01 03**  
 Secador de pelo iónico "BISE" negro  
 1800W inox 304 negro mate  
*304 stainless steel matt black ionic hair  
 dryer "BISE" 1800W* 86,60 €



**NEW**  
**Ref. GW02 08 01 00B**  
 Secador de pelo iónico "BISE" blanco  
 con bolsa 1800W  
*Ionic hair dryer "BISE" white with bag  
 1800W* 72,85 €



**NEW**  
**Ref. GW02 08 01 03B**  
 Secador de pelo iónico "BISE" negro  
 con bolsa 1800W  
*Ionic hair dryer "BISE" black with bag  
 1800W* 77,50 €



**Ref. GW02 06 03 00**  
 Airstyle acero blanca  
*Airstyle steel white* 485,95 €



**Ref. GW02 06 04 01**  
 Airstyle acero inoxidable satinada  
*Airstyle stainless steel brushed* 618,80 €



**Ref. GW02 06 04 02**  
 Airstyle acero inoxidable brillante  
*Airstyle stainless steel polished* 618,80 €





## Dispensadores de papel

Paper dispensers



### Ref. GW03 02 04 01

Dispensador papel jumbo inox 304 satinado

Jumbo paper dispenser 304 stainless steel brushed

67,40 €



### Ref. GW03 02 04 02

Dispensador papel jumbo inox 304 brillante

Jumbo paper dispenser 304 stainless steel polished

71,20 €



**NEW**

### Ref. GW03 02 04 03

Dispensador papel jumbo inox 304 negro mate

Jumbo paper dispenser 304 stainless steel matt black

99,75 €



### Ref. GW03 03 04 00

Dispensador papel doble rollo acero blanco

Two roll paper dispenser steel white

62,85 €



### Ref. GW03 03 04 01

Dispensador papel doble rollo inox 304 satinado

Two standard roll paper dispenser 304 stainless steel brushed

64,80 €



### Ref. GW03 03 04 02

Dispensador papel doble rollo inox 304 brillante

Two standard roll paper dispenser 304 stainless steel polished

66,45 €



### Ref. GW03 04 04 01

Dispensador papel toalla pequeño inox 304 satinado

Paper towel dispenser small size 304 stainless steel brushed

62,85 €



### Ref. GW03 04 04 02

Dispensador papel toalla pequeño inox 304 brillante

Paper towel dispenser small size 304 stainless steel polished

64,80 €



**NEW**

### Ref. GW03 04 04 03

Dispensador papel toalla pequeño inox 304 negro mate

Paper towel dispenser small size 304 stainless steel matt black

91,20 €



### Ref. GW03 05 04 01

Dispensador papel toalla grande inox 304 satinado

Paper towel dispenser large size 304 stainless steel brushed

86,40 €



### Ref. GW03 05 04 02

Dispensador papel toalla grande inox 304 brillante

Paper towel dispenser large size 304 stainless steel polished

90,20 €



**NEW**

### Ref. GW03 05 04 03

Dispensador papel toalla grande inox 304 negro mate

Paper towel dispenser large size 304 stainless steel matt black

124,60 €



**NEW**

### Ref. GW03 24 04 01

Dispensador de papel toalla automático


Automatic paper towel dispenser

401,85 €


	<b>NEW</b> <b>Ref. GW03 27 04 01</b> Dispensador de papel toalla de encimera <i>Countertop paper dispenser</i>	142,85 €
--	---	----------

	<b>NEW</b> <b>Ref. GW03 28 04 01</b> Dispensador de papel toalla detrás de espejo <i>Behind mirror paper dispenser</i>	120,80 €
--	---	----------

	<b>Ref. GW03 08 04 02</b> Portarollos mural 1 rollo inox 304 brillante <i>Wall mounted single roll paper dispenser 304 stainless steel</i>	58,85 €
--	--	---------


	<b>Ref. GW03 10 04 02</b> Portarollos mural 2 rollos inox 304 brillante <i>Wall mounted two roll paper dispenser 304 stainless steel</i>	93,90 €
--	--	---------


	<b>Ref. GW03 09 04 02</b> Portarollos encastrado 1 rollo inox 304 brillante <i>Recessed single roll paper dispenser 304 stainless steel</i>	31,40 €
---	---	---------

	<b>Ref. GW03 11 04 02</b> Portarollos encastrado 2 rollos inox 304 brillante <i>Recessed two roll paper dispenser 304 stainless steel</i>	53,85 €
--	---	---------

	<b>Ref. GW03 08 04 01</b> Portarollos mural 1 rollo inox 304 satinado <i>Wall mounted single roll paper dispenser 304 stainless steel brushed</i>	57,75 €
--	---	---------

	<b>Ref. GW03 12 04 01</b> Dispensador doble rollo mural inox 304 satinado <i>Two roll vertical wall mounted paper dispenser 304 stainless steel</i>	82,80 €
---	---	---------

	<b>Ref. GW03 13 04 01</b> Dispensador doble rollo encastrado inox 304 satinado <i>Two roll vertical recessed paper dispenser 304 stainless steel</i>	113,20 €
---	--	----------

	<b>Ref. GW03 14 03 00</b> Dispensador mural cubre asientos inodoro acero blanco <i>Wall mounted seat cover dispenser steel white</i>	49,20 €
---	--	---------

	<b>Ref. GW03 14 04 01</b> Dispensador mural cubre asientos inox 304 satinado <i>Wall mounted seat cover dispenser 304 stainless steel brushed</i>	54,05 €
---	---	---------

	<b>Ref. GW03 14 04 02</b> Dispensador mural cubre asientos inox 304 brillante <i>Wall mounted seat cover dispenser 304 stainless steel polished</i>	55,70 €
--	---	---------

	<b>Ref. GW03 16 04 02</b> Dispensador toallitas encastrado inox 304 brillante <i>Recessed tissue dispenser 304 stainless steel polished</i>	39,10 €
---	---	---------

	<b>Ref. GW03 15 04 01</b> Dispensador encastrado cubre asientos inox 304 satinado <i>Recessed seat cover dispenser 304 stainless steel brushed</i>	147,50 €
---	--	----------



**Ref. GW03 25 04 01**  
 Dispensador bolsas higiénicas  
 satinado  
*Sanitary bag dispenser brushed*

16,10 €



**Ref. GW03 25 04 02**  
 Dispensador bolsas higiénicas  
 brillante  
*Sanitary bag dispenser polished*

16,10 €



**Ref. GW03 18 01 00**  
 Dispensador 2 rollos/toallitas ABS  
 blanco  
*2 roll/tissue dispenser ABS white*

33,35 €



**Ref. GW03 18 01 04**  
 Dispensador 2 rollos/toallitas ABS  
 plateado  
*2 roll/tissue dispenser ABS silver*

35,85 €



**Ref. GW03 19 01 00**  
 Dispensador papel jumbo ABS blanco  
*Jumbo paper dispenser ABS white*

51,35 €



**Ref. GW03 19 01 04**  
 Dispensador papel jumbo ABS  
 plateado  
*Jumbo paper dispenser ABS silver*

53,85 €



**Ref. GW03 20 01 04**  
 Dispensador papel toalla ABS  
 plateado  
*Paper towel dispenser ABS silver*

61,65 €



**Ref. GW03 20 01 00**  
 Dispensador papel toalla ABS blanco  
*Paper towel dispenser ABS white*

57,75 €



**Ref. GW03 21 01 00**  
 Dispensador mecha ABS blanco  
 Centrefeed paper towel dispenser ABS  
 white

78,60 €



**Ref. GW03 21 01 04**  
 Dispensador mecha ABS plateado  
 Centrefeed paper towel dispenser ABS  
 silver

84,35 €



## Dosificadores de jabón

*Soap dispensers*



**Ref. GW04 01 04 01**  
 Dosificador jabón vertical 1100ml inox  
 304 satinado  
*Vertical soap dispenser 1100ml 304  
 stainless steel brushed*

49,20 €



**NEW**  
**Ref. GW04 01 04 01B**  
 Dosificador jabón vertical 1100ml inox  
 304 satinado, válvulas ABS  
*Vertical soap dispenser 1100ml 304  
 stainless steel brushed, ABS  
 pushbutton*

49,20 €



**Ref. GW04 01 04 02**  
 Dosificador jabón vertical 1100ml inox  
 304 brillante  
*Vertical soap dispenser 1100ml 304  
 stainless steel polished*

50,25 €



**NEW**

**Ref. GW04 01 04 02B**  
Dosificador jabón vertical 1100ml inox 304 brillante, válvulas ABS  
*Vertical soap dispenser 1100ml 304 stainless steel polished, ABS push button*

50,25 €



**Ref. GW04 02 04 01**  
Dosificador jabón horizontal 1100ml inox 304 satinado  
*Horizontal soap dispenser 1100ml 304 stainless steel brushed*

49,20 €



**Ref. GW04 02 04 02**  
Dosificador jabón horizontal 1100ml inox 304 brillante  
*Horizontal soap dispenser 1100ml 304 stainless steel polished*

50,25 €



**Ref. GW04 20 04 01**  
Dosificador jabón mural automático inox satinado  
*Wall mounted automatic dispenser stainless steel brushed*

108,45 €



**Ref. GW04 20 04 02**  
Dosificador jabón mural automático inox brillante  
*Wall mounted automatic dispenser stainless steel bright*

108,45 €



**Ref. GW04 21 04 01**  
Dosificador jabón mural 1800ml inox satinado  
*Wall mounted dispenser 1800ml stainless steel brushed*

79,45 €



**NEW**

**Ref. GW04 21 04 03**  
Dosificador jabón mural 1800ml inox 304 negro mate  
*Wall mounted dispenser 1800ml 304 stainless steel matt black*

102,25 €



**Ref. GW04 06 04 01**  
Dosificador jabón cilíndrico 300ml inox 304 satinado  
*Cylindrical soap dispenser 300ml 304 stainless steel brushed*

93,90 €



**Ref. GW04 06 04 02**  
Dosificador jabón cilíndrico 300ml inox 304 brillante  
*Cylindrical soap dispenser 300ml 304 stainless steel polished*

99,10 €



**Ref. GW04 15 04 02**  
Dosificador jabón mural 300ml inox brillante  
*Wall mounted soap dispenser 300ml 304 stainless steel*

59,95 €



**Ref. GW04 09 04 02**  
Dosificador jabón encastrado bajo encimera 500ml inox  
*Undercounter soap dispenser 500ml 304 stainless steel*

77,20 €



**NEW**

**Ref. GW04 09 01 00**  
Dosificador jabón encastrado bajo encimera 1000ml ABS  
*Undercounter soap dispenser 1000ml ABS*

34,65 €



**Ref. GW04 10 01 00**  
Dosificador jabón encastrado bajo encimera 1000ml ABS  
*Undercounter soap dispenser 1000ml ABS*

47,45 €

**NEW**

**Ref. GW04 10 01 00B**  
Dosificador jabón encastrado bajo encimera 1000ml ABS  
*Undercounter soap dispenser 1000ml ABS*

62,30 €



**NEW**

**Ref. GW04 17 01 00**  
Dosificador de jabón manual 1000ml  
ABS blanco  
*Manual soap dispenser 1000ml ABS  
white*

16,30 €



**NEW**

**Ref. GW04 08 01 00**  
Dosificador de jabón medical en ABS  
blanco  
*Medical soap dispenser ABS white*

59,40 €



**Ref. GW04 12 01 00**  
Dosificador jabón 1000ml ABS blanco  
*Soap dispenser 1000ml ABS white*

38,00 €



**Ref. GW04 13 01 00**  
Dosificador espuma 1000ml ABS  
blanco  
*Foam dispenser 1000ml ABS white*

38,55 €



**Ref. GW04 12 01 04**  
Dosificador jabón 1000ml ABS  
plateado  
*Soap dispenser 1000ml ABS silver*

39,10 €



**Ref. GW04 13 01 04**  
Dosificador espuma 1000ml ABS  
plateado  
*Foam dispenser 1000ml ABS silver*

39,65 €



**Ref. GW04 14 01 00**  
Dosificador jabón automático 1100ml  
ABS blanco  
*Automatic soap dispenser 1100ml ABS  
white*

102,90 €



**Ref. GW04 14 01 04**  
Dosificador jabón automático 1100ml  
ABS plateado  
*Automatic soap dispenser 1100ml ABS  
silver*

105,05 €



**NEW**

**Ref. GW04 15 01 00**  
Dosificador automático en spray  
desinfectante de manos  
*Automatic hand sanitizer dispenser -  
spray*

42,35 €



**NEW**

**Ref. GW04 16 01 00**  
Dosificador automático de jabón/gel  
desinfectante de manos blanco  
1100ml  
*Automatic soap/gel hand sanitizer  
dispenser white 1100ml*

42,35 €



**NEW**

**Ref. GW04 16 01 03**  
Dosificador automático de jabón/gel  
desinfectante de manos negro  
1100ml  
*Automatic soap/gel hand sanitizer  
dispenser black 1100ml*

52,55 €



**NEW**

**Ref. GW04 16 01 04**  
Dosificador automático de jabón/gel  
desinfectante de manos plateado  
1100ml  
*Automatic soap/gel hand sanitizer  
dispenser silver 1100ml*

47,25 €



**Accesorios de baño**  
*Washroom accessories*



**Ref. GW05 01 05 02**  
Percha simple zinc "Cartago Series"  
*Hanger zinc "Cartago series"*

7,95 €

	<p><b>NEW</b></p> <p><b>Ref. GW05 01 05 02B</b>  Percha doble zinc "Cartago series"  <i>Double Hanger zinc "Cartago series"</i></p>	<p>10,25 €</p>		<p><b>Ref. GW05 08 05 02</b>  Portarrollos/Reserva zinc "Cartago Series"  <i>Toilet roll holder "Cartago series"</i></p> <p>12,05 €</p>
	<p><b>Ref. GW05 02 05 02</b>  Vaso simple zinc "Cartago Series"  <i>Tumbler holder zinc "Cartago series"</i></p>	<p>13,25 €</p>		<p><b>Ref. GW05 09 05 02</b>  Escobillero zinc "Cartago Series"  <i>Toilet brush zinc "Cartago series"</i></p> <p>22,80 €</p>
	<p><b>Ref. GW05 03 05 02</b>  Jabonera zinc "Cartago Series"  <i>Soap basket zinc "Cartago series"</i></p>	<p>12,70 €</p>		<p><b>Ref. GW05 10 05 02</b>  Toallero anilla zinc "Cartago Series"  <i>Towel ring zinc "Cartago series"</i></p> <p>13,05 €</p>
	<p><b>Ref. GW05 04 05 02</b>  Jabonera zinc con plato "Cartago Series"  <i>Soap dish zinc "Cartago series"</i></p>	<p>13,70 €</p>		<p><b>Ref. GW05 11 05 02</b>  Toallero barra zinc "Cartago Series"  <i>Towel bar zinc "Cartago series"</i></p> <p>24,55 €</p>
	<p><b>Ref. GW05 05 05 02</b>  Dispensador de jabón mural zinc "Cartago Series"  <i>Wall mounted soap dispenser zinc "Cartago series"</i></p>	<p>17,15 €</p>		<p><b>Ref. GW05 12 05 02</b>  Toallero barra doble zinc "Cartago Series"  <i>Double towel bar zinc "Cartago series"</i></p> <p>32,60 €</p>
	<p><b>Ref. GW05 06 05 02</b>  Jabonera ducha zinc "Cartago Series"  <i>Shower basket zinc "Cartago series"</i></p>	<p>41,25 €</p>		<p><b>Ref. GW05 13 05 02</b>  Repisa cristal zinc "Cartago Series"  <i>Glass shelf zinc "Cartago series"</i></p> <p>45,40 €</p>
	<p><b>Ref. GW05 07 05 02</b>  Portarrollos zinc "Cartago Series"  <i>Paper holder zinc "Cartago series"</i></p>	<p>17,80 €</p>		<p><b>NEW</b></p> <p><b>Ref. GW05 40 04 02</b>  Percha doble inox 304 "Creta series"  <i>Double hanger 304 stainless steel "Creta series"</i></p> <p>14,35 €</p>

**NEW**  
**Ref. GW05 40 04 02B**  
Percha simple inox 304 "Creta series"  
Single hanger 304 stainless steel  
"Creta series"

12,60 €

**NEW**  
**Ref. GW05 47 04 02**  
Toallero anilla inox 304 "Creta series"  
Towel ring 304 stainless steel "Creta series"

19,90 €

**NEW**  
**Ref. GW05 41 04 02**  
Vaso simple inox 304 "Creta series"  
Tumbler Holder 304 Stainless steel  
"Creta series"

17,95 €

**NEW**  
**Ref. GW05 48 04 02**  
Escobillero inox 304 "Creta series"  
Toilet brush holder 304 stainless steel  
"Creta series"

30,30 €

**NEW**  
**Ref. GW05 42 04 02**  
Jabonera inox 304 "Creta series"  
Soap basket 304 stainless steel "Creta series"

26,70 €

**NEW**  
**Ref. GW05 49 04 02**  
Toallero barra simple inox 304 "Creta series"  
Towel bar 304 stainless steel "Creta series"


37,25 €

**NEW**  
**Ref. GW05 43 04 02**  
Jabonera inox 304 con plato "Creta series"  
Soap dish 304 stainless steel "Creta series"

16,65 €

**NEW**  
**Ref. GW05 50 04 02**  
Toallero barra doble inox 304 "Creta series"  
Double towel bar 304 stainless steel  
"Creta series"

48,85 €

**NEW**  
**Ref. GW05 44 04 02**  
Dispensador jabón mural inox 304  
"Creta series"  
Wall mounted soap dispenser 304  
stainless steel "Creta series"

21,30 €

**NEW**  
**Ref. GW05 51 04 02**  
Repisa cristal inox 304 "Creta series"  
Glass shelf 304 stainless steel "Creta series"

45,60 €

**NEW**  
**Ref. GW05 45 04 02**  
Portarrollos inox 304 "Creta series"  
Paper holder 304 stainless steel "Creta series"

19,80 €

**NEW**  
**Ref. GW05 52 04 02**  
Toallero repisa inox 304 "Creta series"  
Towel rack 304 stainless steel "Creta series"

95,10 €

**NEW**  
**Ref. GW05 46 04 02**  
Portarrollos doble inox 304 "Creta series"  
Double paper holder 304 stainless steel  
"Creta series"

23,05 €

**NEW**  
**Ref. GW05 01 04 01**  
Percha doble inox 304 "Gerunda Series"  
Double hanger 304 stainless steel  
"Gerunda series"

12,85 €

	<p><b>NEW</b></p> <p><b>Ref. GW05 01 04 01B</b>  Percha simple inox 304 "Gerunda series"  Hanger 304 stainless steel "Gerunda series"</p>	11,85 €		<p><b>Ref. GW05 08 04 01</b>  Toallero anilla inox 304 "Gerunda Series"  Towel ring 304 stainless steel "Gerunda series"</p>	17,95 €
	<p><b>Ref. GW05 02 04 01</b>  Vaso simple inox 304 "Gerunda Series"  Tumbler holder 304 stainless steel "Gerunda series"</p>	19,25 €		<p><b>Ref. GW05 07 04 01</b>  Escobillero inox 304 "Gerunda Series"  Toilet brush holder 304 stainless steel "Gerunda series"</p>	31,70 €
	<p><b>Ref. GW05 03 04 01</b>  Jabonera inox 304 "Gerunda Series"  Soap basket 304 stainless steel "Gerunda series"</p>	23,45 €		<p><b>Ref. GW05 09 04 01</b>  Toallero barra simple inox 304 "Gerunda Series"  Towel bar 304 stainless steel "Gerunda series"</p>	28,80 €
	<p><b>Ref. GW05 04 04 01</b>  Jabonera inox 304 con plato "Gerunda Series"  Soap dish 304 stainless steel "Gerunda series"</p>	18,70 €		<p><b>Ref. GW05 11 04 01</b>  Repisa cristal inox 304 "Gerunda Series"  Glass shelf 304 stainless steel "Gerunda series"</p>	39,00 €
	<p><b>Ref. GW05 05 04 01</b>  Dispensador de jabón mural inox 304 "Gerunda Series"  Wall mounted soap dispenser 304 stainless steel "Gerunda series"</p>	22,80 €		<p><b>Ref. GW05 10 04 01</b>  Toallero barra doble inox 304 "Gerunda Series"  Double towel bar 304 stainless steel "Gerunda series"</p>	39,40 €
	<p><b>Ref. GW05 06 04 01</b>  Portarrollos inox 304 "Gerunda Series"  Paper holder 304 stainless steel "Gerunda series"</p>	23,70 €		<p><b>Ref. GW05 12 04 01</b>  Toallero repisa inox 304 "Gerunda Series"  Towel rack 304 stainless steel "Gerunda series"</p>	97,35 €
	<p><b>Ref. GW05 25 04 01</b>  Portarrollos/ Reserva inox 304 "Gerunda series"  Paper holder 304 stainless steel "Gerunda series"</p>	25,20 €		<p><b>Ref. GW05 13 04 01</b>  Percha simple inox 304 "Formentera Series"  Hanger 304 stainless steel "Formentera series"</p>	14,80 €



	<b>NEW</b> <b>Ref. GW05 13 04 01B</b> Percha doble inox 304 "Formentera Series" <i>Double Hanger 304 stainless steel "Formentera series"</i>	15,75 €
--	---	---------

	<b>Ref. GW05 14 04 01</b> Vaso simple inox 304 "Formentera Series" <i>Tumbler holder 304 stainless steel "Formentera series"</i>	21,95 €
--	--	---------

	<b>Ref. GW05 15 04 01</b> Jabonera inox 304 "Formentera Series" <i>Soap basket 304 stainless steel "Formentera series"</i>	27,25 €
--	--	---------

	<b>Ref. GW05 16 04 01</b> Jabonera inox 304 con plato "Formentera Series" <i>Soap dish 304 stainless steel "Formentera series"</i>	22,25 €
--	--	---------

	<b>Ref. GW05 17 04 01</b> Dispensador de jabón mural inox 304 "Formentera Series" <i>Wall mounted soap dispenser 304 stainless steel "Formentera series"</i>	25,85 €
---	--	---------

	<b>Ref. GW05 18 04 01</b> Portarrollos inox 304 "Formentera Series" <i>Paper holder 304 stainless steel "Formentera series"</i>	24,20 €
--	---	---------

	<b>Ref. GW05 19 04 01</b> Escobillero inox 304 "Formentera Series" <i>Toilet brush holder 304 stainless steel "Formentera series"</i>	33,35 €
--	---	---------

	<b>Ref. GW05 20 04 01</b> Toallero anilla inox 304 "Formentera Series" <i>Towel ring 304 stainless steel "Formentera series"</i>	23,90 €
---	--	---------


	<b>Ref. GW05 21 04 01</b> Toallero barra simple inox 304 "Formentera Series" <i>Towel bar 304 stainless steel "Formentera series"</i>	35,10 €
---	---	---------







	<b>Ref. GW05 22 04 01</b> Toallero barra doble inox 304 "Formentera Series" <i>Double towel bar 304 stainless steel "Formentera series"</i>	44,50 €
---	---	---------

	<b>Ref. GW05 23 04 01</b> Repisa cristal inox 304 "Formentera Series" <i>Glass shelf 304 stainless steel "Formentera series"</i>	52,65 €
---	--	---------

	<b>Ref. GW05 24 04 01</b> Toallero repisa inox 304 "Formentera Series" <i>Towel rack 304 stainless steel "Formentera series"</i>	126,35 €
--	--	----------

	<b>NEW</b> <b>Ref. GW05 55 04 03</b> Percha simple inox 304 negro mate "Pompei Series" <i>Hanger 304 stainless steel matt black "Pompei series"</i>	17,70 €
---	--	---------

	<b>NEW</b> <b>Ref. GW05 56 04 03</b> Vaso simple inox 304 "Pompei Series" <i>Tumbler holder 304 stainless steel "Pompei series"</i>	27,25 €
---	--	---------

 <p><b>NEW</b>  <b>Ref. GW05 57 04 03</b>  <b>Jabonera inox 304 "Pompei Series"</b>  <i>Soap basket 304 stainless steel "Pompei Series"</i></p>	 <p><b>NEW</b>  <b>Ref. GW05 64 04 03</b>  <b>Toallero barra simple inox 304 "Pompei Series"</b>  <i>Towel bar 304 stainless steel "Pompei Series"</i></p>
 <p><b>NEW</b>  <b>Ref. GW05 58 04 03</b>  <b>Jabonera inox 304 con plato "Pompei Series"</b>  <i>Soap dish 304 stainless steel "Pompei Series"</i></p>	 <p><b>NEW</b>  <b>Ref. GW05 65 04 03</b>  <b>Toallero barra doble inox 304 "Pompei Series"</b>  <i>Double towel bar 304 stainless steel "Pompei Series"</i></p>
 <p><b>NEW</b>  <b>Ref. GW05 59 04 03</b>  <b>Dispensador jabón mural inox 304 "Pompei Series"</b>  <i>Wall mounted soap dispenser 304 stainless steel "Pompei Series"</i></p>	 <p><b>NEW</b>  <b>Ref. GW05 66 04 03</b>  <b>Repisa cristal inox 304 "Pompei Series"</b>  <i>Glass shelf 304 stainless steel "Pompei Series"</i></p>
 <p><b>NEW</b>  <b>Ref. GW05 60 04 03</b>  <b>Jabonera ducha inox 304 "Pompei Series"</b>  <i>Shower basket 304 stainless steel "Pompei Series"</i></p>	 <p><b>NEW</b>  <b>Ref. GW05 67 04 03</b>  <b>Toallero repisa inox 304 "Pompei Series"</b>  <i>Towel rack 304 stainless steel "Pompei Series"</i></p>
 <p><b>NEW</b>  <b>Ref. GW05 61 04 03</b>  <b>Portarrollos inox 304 "Pompei Series"</b>  <i>Paper holder 304 stainless steel "Pompei Series"</i></p>	 <p><b>Ref. GW05 01 06 02</b>  <b>Percha simple latón "Itálica Series"</b>  <i>Hanger chromed brass "Itálica series"</i></p>
 <p><b>NEW</b>  <b>Ref. GW05 62 04 03</b>  <b>Toallero recto inox 304 "Pompei Series"</b>  <i>Straight towel ring 304 stainless steel "Pompei Series"</i></p>	 <p><b>Ref. GW05 02 06 02</b>  <b>Vaso simple latón "Itálica Series"</b>  <i>Tumbler holder chromed brass "Itálica series"</i></p>
 <p><b>NEW</b>  <b>Ref. GW05 63 04 03</b>  <b>Escobillero inox 304 "Pompei Series"</b>  <i>Toilet brush holder 304 stainless steel "Pompei Series"</i></p>	 <p><b>Ref. GW05 03 06 02</b>  <b>Jabonera latón "Itálica Series"</b>  <i>Soap basket chromed brass "Itálica series"</i></p>



**Ref. GW05 04 06 02**  
Jabonera con plato latón "Itálica Series"  
*Soap dish chromed brass "Itálica series"*

23,90 €



**Ref. GW05 09 06 02**  
Toallero barra doble latón "Itálica Series"  
*Double towel bar chromed brass "Itálica series"*

57,10 €



**Ref. GW05 05 06 02**  
Portarrollos/Reserva latón "Itálica Series"  
*Paper holder chromed brass "Itálica series"*

23,55 €



**Ref. GW05 11 06 02**  
Toallero repisa latón "Itálica Series"  
*Towel rack chromed brass "Itálica series"*

136,55 €



**Ref. GW05 28 06 02**  
Portarrollos/Reserva latón "Itálica Series"  
*Toilet roll holder "Itálica Serie"*

27,25 €



**Ref. GW05 12 06 02**  
Percha doble latón "Lucentum Series"  
*Double hanger chromed brass "Lucentum series"*

21,50 €



**Ref. GW05 07 06 02**  
Toallero anilla latón "Itálica Series"  
*Towel ring chromed brass "Itálica series"*

20,10 €



**Ref. GW05 13 06 02**  
Vaso simple latón "Lucentum Series"  
*Tumbler holder chromed brass "Lucentum series"*

33,55 €



**Ref. GW05 06 06 02**  
Escobillero latón "Itálica Series"  
*Toilet brush chromed brass "Itálica series"*

39,55 €



**Ref. GW05 14 06 02**  
Jabonera latón "Lucentum Series"  
*Soap basket chromed brass "Lucentum series"*

40,85 €



**Ref. GW05 08 06 02**  
Toallero barra simple latón "Itálica Series"  
*Towel bar chromed brass "Itálica series"*

40,05 €



**Ref. GW05 15 06 02**  
Jabonera con vaso latón "Lucentum Series"  
*Soap dish chromed brass "Lucentum series"*

34,75 €



**Ref. GW05 10 06 02**  
Repisa cristal latón "Itálica Series"  
*Glass shelf chromed brass "Itálica series"*

59,50 €



**Ref. GW05 16 06 02**  
Escobillero latón "Lucentum Series"  
*Toilet brush chromed brass "Lucentum series"*

45,70 €



**Ref. GW05 17 06 02**  
Portarrollos latón "Lucentum Series"  
*Paper holder brass "Lucentum Series"*

39,20 €



**Ref. GW05 24 06 02**  
Jabonera rectangular latón  
*Rectangular soap basket chromed brass*

40,50 €



**Ref. GW05 18 06 02**  
Toallero barra simple latón "Lucentum Series"  
*Towel bar chromed brass "Lucentum series"*

48,85 €



**Ref. GW05 25 04 02**  
Jabonera rectangular inox 304  
*Rectangular soap basket 304 stainless steel*

23,70 €



**Ref. GW05 19 06 02**  
Toallero barra doble latón "Lucentum Series"  
*Double towel bar chromed brass "Lucentum series"*

69,50 €



**Ref. GW05 26 06 02**  
Jabonera triangular latón  
*Rectangular soap basket chromed brass*

48,85 €



**Ref. GW05 20 06 02**  
Repisa cristal latón "Lucentum Series"  
*Glass shelf chromed brass "Lucentum series"*

66,10 €



**Ref. GW05 27 04 02**  
Jabonera triangular inox 304  
*Triangular soap basket 304 stainless steel*

30,75 €



**Ref. GW05 21 06 02**  
Toallero repisa latón "Lucentum Series"  
*Towel rack chromed brass "Lucentum series"*

147,50 €



**NEW**  
**Ref. GW05 53 04 02**  
Jabonera rectangular inox 304 brillo  
*Rectangular soap basket 304 stainless steel bright*

29,20 €



**Ref. GW05 22 06 02**  
Manillón sin jabonera latón cromado  
*Support grab bar without soap dish chromed brass*

49,20 €



**NEW**  
**Ref. GW05 54 04 02**  
Jabonera triangular inox 304 brillo  
*Triangular soap basket 304 stainless steel bright*

29,20 €



**Ref. GW05 23 06 02**  
Manillón con jabonera latón cromado  
*Support grab bar with soap dish chromed brass*

69,90 €



**Ref. GW05 28 04 02**  
Escobillero básico inox 304 brillante  
*Toilet brush stainless steel polished*

27,50 €



**Ref. GW05 38 04 01**  
Escobillero inox satinado  
*Toilet brush stainless steel brushed*

27,50 €



**Ref. GW05 31 06 02**  
Espejo redondo de aumento con luz LED latón cromado  
*Magnifying mirror with LED light chromed brass*

167,70 €



**NEW**  
**Ref. GW05 37 04 02**  
Portarrollos con soporte para móvil inox 304 brillo  
*Paper holder with mobile shelf 304 stainless steel polished*

14,00 €



**NEW**  
**Ref. GW05 54 06 02**  
Espejo de aumento con LED  
*Magnifying mirror with LED*

162,25 €



**Ref. GW05 29 04 02**  
Tendadero retráctil inox  
*Retractable hanger 304 stainless steel*

20,45 €



**Ref. GW05 32 05 02**  
Percha múltiple 4 x 1 zinc + inox  
*4x1 hangers zinc + stainless steel*

16,85 €



**NEW**  
**Ref. GW05 38 06 02**  
Espejo Slim redondo de aumento latón cromado  
*Round Slim magnifying mirror chromed brass*

53,50 €



**Ref. GW05 33 05 01**  
Percha simple  
*Basic hanger*

7,95 €



**NEW**  
**Ref. GW05 39 06 02**  
Espejo Slim cuadrado de aumento latón cromado  
*Square Slim magnifying mirror chromed brass*

53,50 €



**Papeleras**  
*Wastepaper bins*



**Ref. GW05 30 06 02**  
Espejo redondo de aumento latón cromado  
*Magnifying mirror chromed brass*

67,75 €



**Ref. GW06 01 04 01**  
Papelera 3L inox satinada  
*Wastepaper bin 3L stainless steel brushed*

22,15 €



**NEW**  
**Ref. GW05 30 06 03**  
Espejo con aumento negro  
*Magnifying mirror black*

85,55 €



**Ref. GW06 02 04 01**  
Papelera 5L inox satinada  
*Wastepaper bin 5L stainless steel brushed*

31,15 €



**Ref. GW06 03 04 01**  
 Papelerera 12L inox satinada  
 Wastepaper bin 12L stainless steel brushed

58,50 €



**Ref. GW06 04 04 01**  
 Papelerera 20L inox satinada  
 Wastepaper bin 20L stainless steel brushed

86,85 €



**Ref. GW06 01 04 02**  
 Papelerera 3L inox brillante  
 Wastepaper bin 3L stainless steel polished

22,15 €



**Ref. GW06 02 04 02**  
 Papelerera 5L inox brillante  
 Wastepaper bin 5L stainless steel polished

31,15 €



**Ref. GW06 03 04 02**  
 Papelerera 12L inox brillante  
 Wastepaper bin 12L stainless steel polished

58,50 €



**Ref. GW06 04 04 02**  
 Papelerera 20L inox brillante  
 Wastepaper bin 20L stainless steel polished

86,85 €



**NEW**  
**Ref. GW06 02 03 03**  
 Papelerera 5L inox negro  
 Wastepaper bin 5L black stainless steel

32,60 €



**Ref. GW06 07 04 01**  
 Papelerera 9L sin tapa inox satinado  
 Open wastepaper bin 9L stainless steel brushed

58,50 €



**Ref. GW06 24 04 01**  
 Papelerera 9,4l con tapa inox satinado  
 Wastepaper bin 9,4l stainless steel brushed

69,70 €



**Ref. GW06 06 04 01**  
 Papelerera push 40L inox satinado  
 Push wastepaper bin 40L stainless steel brushed

182,45 €



**Ref. GW06 10 04 02**  
 Papelerera con cenicero inox brillante  
 Floor standing ashtray bin stainless steel polished

142,95 €



**Ref. GW06 12 02 01**  
 Cenicero mural cilindrico aluminio  
 Wall mounted cylindric ashtray bin aluminium

78,25 €



**NEW**  
**Ref. GW06 14 04 03**  
 Papelerera mural inox 304 negro mate  
 Wall mounted paper dispenser 304 stainless steel matt black

158,25 €



**NEW**  
**Ref. GW06 17 04 01**  
 Papelerera mural 10L inox 304 satinado  
 Wall mounted paper bin 10L 304 stainless steel satin

262,10 €



**NEW**

**Ref. GW06 37 04 02T**

Papelera de encimera con tapa basculante  
*Counter mounted waste chute with lid*

61,35 €



**NEW**

**Ref. GW06 37 04 02**

Papelera de encimera  
*Counter mounted waste chute*

51,80 €



**Ref. GW06 15 04 01**

Papelera mural para compresas inox 304 satinado  
*Wall mounted sanitary napkin bin 304 stainless steel brushed*

81,50 €



**Ref. GW06 13 04 01**

Papelera mural 7L inox 304 satinado  
*Wall mounted wastepaper bin 7L 304 stainless steel brushed*

55,70 €



**Ref. GW06 14 04 01**

Papelera mural 23L inox 304 satinado  
*Wall mounted wastepaper bin 23L 304 stainless steel brushed*

109,40 €



**Ref. GW06 16 02 01**

Papelera 50L aluminio satinado  
*Waste bin 50L aluminium brushed*

495,40 €



**Ref. GW06 17 02 01**

Papelera 100L aluminio satinado  
*Wastepaper bin 100L aluminium brushed*

820,95 €



**Ref. GW06 19 04 01**

Papelera 72L inox satinado  
*Wastepaper bin 72L stainless steel brushed*

837,80 €



**Ref. GW06 18 02 01**

Papelera reciclaje 60+60L aluminio satinado  
*Recycling waste bin 60+60L aluminium brushed*

857,00 €



**Ref. GW06 27 02 01**

Papelera reciclaje 3 divisiones metálicos  
*3 compartment recycling bin*

903,45 €



**NEW**

**Ref. GW06 20 04 01**

Papelera transparente 3 divisores para aeropuerto  
*3 compartment Airport Security recycling bin*

1171,40 €



**Cambiapañales**

*Baby changing stations*



**NEW**

**Ref. GW07 05 01 00**

Cambiapañales "Genwec Baby"  
*Baby changing station "Genwec Baby"*

367,70 €



**NEW**

**Ref. GW07 05 04 01**

Cambiapañales "Genwec Baby"  
*Baby changing station "Genwec Baby"*

674,90 €



**Ref. GW07 02 01 00**  
Cambiador polietileno vertical  
*Baby change station polyethylene vertical*

461,00 €



**Ref. GW07 03 04 02**  
Cambiador inox horizontal mural  
*Baby change station stainless steel surface mounted*

2290,55 €



**Ref. GW07 04 04 02**  
Cambiador inox horizontal encastrado  
*Baby change station stainless steel recessed*

2289,65 €



**Sanitarios acero inoxidable**  
*Stainless steel sanitary products*



**Ref. GW08 11 04 02**  
Lavamanos para encimera 305mm sin rebosadero  
*Built-in washbasin 305mm without overflow outlet*

64,70 €



**Ref. GW08 12 04 02**  
Lavamanos para encimera 305mm con rebosadero  
*Built-in washbasin 305mm with overflow outlet*

67,00 €



**Ref. GW08 17 04 02**  
Lavamanos para encimera 305mm sin rebosadero ala plana  
*Built-in washbasin 305mm without overflow outlet flat wing*

64,70 €



**Ref. GW08 18 04 02**  
Lavamanos para encimera 305mm con rebosadero ala plana  
*Built-in washbasin 305mm with overflow outlet flat wing*

67,00 €



**Ref. GW08 13 04 02**  
Lavamanos para encimera 355mm sin rebosadero  
*Built-in washbasin 355mm without overflow outlet*

70,00 €



**Ref. GW08 14 04 02**  
Lavamanos para encimera 355mm con rebosadero  
*Built-in washbasin 355mm with overflow outlet*

72,10 €



**Ref. GW08 19 04 02**  
Lavamanos para encimera 355mm sin rebosadero ala plana  
*Built-in washbasin 355mm without overflow outlet flat wing*

70,00 €



**Ref. GW08 20 04 02**  
Lavamanos para encimera 355mm con rebosadero ala plana  
*Built-in washbasin 355mm with overflow outlet flat wing*

72,10 €



**Ref. GW08 15 04 02**  
Lavamanos para encimera 405mm sin rebosadero  
*Built-in washbasin 405mm without overflow outlet*

83,60 €



**Ref. GW08 16 04 02**  
Lavamanos para encimera 405mm con rebosadero  
*Built-in washbasin 405mm with overflow outlet*

85,65 €





**Ref. GW08 21 04 02**  
Lavamanos para encimera 405mm sin  
rebosadero ala plana  
*Built-in washbasin 405mm without  
overflow outlet flat wing*

83,60 €



**Ref. GW08 22 04 02**  
Lavamanos para encimera 405mm  
con rebosadero ala plana  
*Built-in washbasin 405mm with  
overflow outlet flat wing*

85,65 €



**Ref. GW08 23 06 02**  
Sifón botella para lavabo y bidé 1 1/4"  
*Extensible bidet and washbasin siphon  
1 1/4"*

61,65 €



**Ref. GW08 24 06 02**  
Rebosadero latón visto 1 1/4"  
*External brass overflow 1 1/4"*

40,40 €



**NEW**  
**Ref. GW08 72 04 01**  
Lavamanos sobre encimera redondo  
*Countertop rounded washbasin*

669,05 €



**NEW**  
**Ref. GW08 53 04 01**  
Lavamanos sobre encimera  
*Countertop washbasin*

571,15 €



**NEW**  
**Ref. GW08 54 04 01**  
Lavamanos a pared con desagüe  
oculto  
*Wall mounted washbasin with  
concealed drain*

951,85 €



**NEW**

**Ref. GW08 86 04 01**  
Separador de urinario  
*Urinal divider*

422,80 €



**NEW**

**Ref. GW08 90 04 01**  
Lavabo antivandálico transmuro  
*Vandal proof cross wall installed  
washbasin*

1247,90 €



**Ref. GW08 70 04 02**  
Espejo antivandálico 610x400mm  
*Vandal proof mirror 610x400mm*

208,60 €



**Ref. GW08 71 04 02**  
Espejo antivandálico 900x600mm  
*Vandal proof mirror 900x600mm*

405,55 €



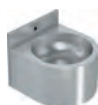
**Ref. GW08 25 04 01**  
Lavamanos mural redondo inox 304  
satinado  
*Round wall hung washbasin, brushed  
304 stainless steel*

263,30 €



**Ref. GW08 26 04 01**  
Lavamanos esquinero redondo inox  
304 satinado  
*Corner round wall hung washbasin,  
brushed 304 stainless steel*

188,00 €



**Ref. GW08 27 04 01**  
Lavamanos mural antivandálico inox  
304 satinado  
*Anti vandalism wall hung washbasin,  
brushed 304 stainless steel*

525,70 €



**Ref. GW08 47 04 01**  
Lavamanos quirúrgico inox 304  
satinado 700mm  
*Surgical washbasin, brushed 304  
stainless steel 700mm*

2163,55 €



**Ref. GW08 39 04 01**  
Lavamanos colectivo inox 304 sin  
peto 2400mm  
*Collective wall hung washbasin, 304  
stainless steel without blacksplash  
2400mm*

1139,90 €



**Ref. GW08 48 04 01**  
Lavamanos quirúrgico inox 304  
satinado 1400mm  
*Surgical washbasin, brushed 304  
stainless steel 1400mm*

2844,85 €



**Ref. GW08 45 04 01**  
Juego escuadras de soporte (2  
unidades)  
*Wall frame supports (2 units)*

106,70 €



**Ref. GW08 49 04 01**  
Lavamanos quirúrgico inox 304  
satinado 2100mm  
*Surgical washbasin, brushed 304  
stainless steel 2100mm*

3295,20 €



**Ref. GW08 40 04 01**  
Lavamanos colectivo inox 304 con  
peto 600mm  
*Collective wall hung washbasin, 304  
stainless steel with blacksplash  
600mm*

645,05 €



**Ref. GW08 35 04 01**  
Lavamanos colectivo inox 304 sin  
peto 600mm  
*Collective wall hung washbasin, 304  
stainless steel without blacksplash  
600mm*

521,80 €



**Ref. GW08 41 04 01**  
Lavamanos colectivo inox 304 con  
peto 1200mm  
*Collective wall hung washbasin, 304  
stainless steel with blacksplash  
1200mm*

804,70 €



**Ref. GW08 36 04 01**  
Lavamanos colectivo inox 304 sin  
peto 1200mm  
*Collective wall hung washbasin, 304  
stainless steel without blacksplash  
1200mm*

708,10 €



**Ref. GW08 42 04 01**  
Lavamanos colectivo inox 304 con  
peto 1500mm  
*Collective wall hung washbasin, 304  
stainless steel with blacksplash  
1500mm*

987,20 €



**Ref. GW08 37 04 01**  
Lavamanos colectivo inox 304 sin  
peto 1500mm  
*Collective wall hung washbasin, 304  
stainless steel without blacksplash  
1500mm*

798,95 €



**Ref. GW08 43 04 01**  
Lavamanos colectivo inox 304 con  
peto 1800mm  
*Collective wall hung washbasin, 304  
stainless steel with blacksplash  
1800mm*

1142,40 €



**Ref. GW08 38 04 01**  
Lavamanos colectivo inox 304 sin  
peto 1800mm  
*Collective wall hung washbasin, 304  
stainless steel without blacksplash  
1800mm*

928,20 €



**Ref. GW08 44 04 01**  
Lavamanos colectivo inox 304 con  
peto 2400mm  
*Collective wall hung washbasin, 304  
stainless steel with blacksplash  
2400mm*

1295,30 €



**Ref. GW08 46 04 01**  
Juego patas de soporte (2 unidades)  
*Support legs (2 units)*

176,05 €



**Ref. GW08 50 04 01**  
Lavamanos registrable con pedestal,  
una agua  
*Pedal operated washbasin, no  
thermostatic*

589,95 €



**Ref. GW08 51 04 01**  
Lavamanos registrable con pedestal,  
dos aguas  
*Pedal operated washbasin, hot and cold  
water*

698,90 €



**Ref. GW08 52 04 01**  
Lavamanos mural activado con  
rodilla, una agua  
*Knee operated washbasin, no  
thermostatic*

443,10 €



**NEW**  
**Ref. GW08 84 04 01**  
Fregadero a pared  
*Wall mounted sink*

666,85 €



**Ref. GW08 55 04 01**  
Inodoro anti vandálico inox 304  
satinado salida a pared  
*Anti vandalism toilet 304 stainless  
steel, wall outlet*

1039,85 €



**Ref. GW08 56 04 01**  
Inodoro anti vandálico inox 304  
satinado salida a suelo  
*Anti vandalism toilet 304 stainless  
steel, floor outlet*

1039,85 €



**Ref. GW08 57 04 01**  
Inodoro suspendido a pared inox 304  
satinado  
*Wall mounted toilet 304 stainless steel*

1002,30 €



**Ref. GW08 70 01 00**  
Tapa para asiento GW08 55, GW08 56,  
GW08 57  
*PVC cover for GW08 55, GW08 56,  
GW08 57*

118,10 €



**Ref. GW08 58 04 01**  
Inodoro con cisterna de descarga inox  
304 satinado  
*Toilet with discharge tank 304 stainless  
steel*

1277,95 €



**Ref. GW08 59 04 01**  
Placa turca inox 304 brillante  
*Squat toilet 304 stainless steel polished*

364,10 €



**Ref. GW08 60 04 01**  
Urinario redondo inox 304 satinado  
*Rounded urinal 304 stainless steel*

616,75 €



**Ref. GW08 61 04 01**  
Urinario mural inox 304 satinado  
*Wall hung urinal 304 stainless steel*

570,60 €



**Ref. GW08 62 04 01**  
Urinario colectivo a pared inox 304  
satinado 1 200 mm  
*Wall mounted collective urinal 304  
stainless steel, 1 200 mm*

1328,85 €

**Ref. GW08 63 04 01**

Urinario colectivo a pared inox 304 satinado 1 800 mm  
*Wall mounted collective urinal 304 stainless steel, 1 400 mm*

1715,50 €

**Ref. GW08 64 04 01**

Urinario colectivo a pared inox 304 satinado 2 400 mm  
*Wall mounted collective urinal 304 stainless steel, 1 800 mm*

1942,30 €

**Ref. GW08 73 04 01**

Compacto de lavabo e inodoro antivandálico derecha (con accesorios)  
*Urinal and washbasin set, angle right (with accessories)*

2346,75 €

**Ref. GW08 74 04 01**

Compacto lavabo e inodoro a suelo izquierda (con accesorios)  
*Urinal and washbasin set, angle left (with accessories)*

2346,75 €

**Ref. GW08 75 04 01**

Compacto lavabo e inodoro a suelo centro (con accesorios)  
*Urinal and washbasin set, centered (with accessories)*

2346,75 €

**NEW****Ref. GW08 70 04 01**

Espejo antivandálico 610x400mm  
*Vandal proof mirror 610x400mm*

208,60 €

**NEW****Ref. GW08 71 04 01**

Espejo antivandálico 900x600mm  
*Vandal proof mirror 900x600mm*

405,44 €

**Ref. GW08 68 04 01**

Plato de ducha inox 304 satinado 700x700 mm  
*Built in shower pan 304 stainless steel, 700x700 mm*

353,35 €

**Ref. GW08 69 04 01**

Plato de ducha inox 304 satinado 800x800 mm  
*Built in shower pan 304 stainless steel, 800x800 mm*

431,80 €

**Muebles compactos**  
*Compact furniture***Ref. GW09 01 04 01**

Dispensador de toallas, secamanos y papelera encastrado  
*Built-in compact furniture, hand dryer / paper dispenser / wastepaper bin*

1066,45 €

**Ref. GW09 07 04 01**

Dispensador de toallas, secamanos y papelera de superficie  
*Surface paper towel dispenser, hand dryer and wastepaper bin*

1119,50 €

**Ref. GW09 02 04 01**

Dispensador de toallas y papelera encastrado  
*Built-in paper towel dispenser & bin*

561,95 €

**Ref. GW09 08 04 01**

Dispensador de toalla y papelera de superficie  
*Surface paper towel dispenser & bin*

570,40 €



**Ref. GW09 11 04 01**  
Secamanos encastrado con escobillas  
*Built-in hand dryer with brushes*

631,50 €



**Ref. GW09 12 04 01**  
Secamanos encastrado sin escobillas  
*Built-in hand dryer brushless*

755,10 €



**Ref. GW09 13 04 01**  
Mueble compacto de superficie con secamanos  
*Compact furniture, surface type, with hand dryer*

631,50 €



**Ref. GW09 03 04 01**  
Mueble compacto dispensador toalla  
*Built-in compact furniture paper towel dispenser*

255,35 €



**Ref. GW09 09 04 01**  
Mueble compacto de superficie dispensador toalla  
*Compact furniture, surface type, paper towel dispenser*

255,35 €



**Ref. GW09 14 04 01**  
Mueble compacto encastrado con papelera  
*Built-in compact furniture wastepaper bin*

407,75 €



**Ref. GW09 15 04 01**  
Mueble compacto semi-encastrado con papelera  
*Semi-recessed compact furniture wastepaper bin*

360,95 €



## Fuentes de agua *Water dispensers*



**Ref. GW10 01 04 02**  
Fuente agua fría con llenavaso, accionado por pedal 35l/h  
*Cold water jet operated by pedal, cup-filler 35l/h*

1121,60 €



**Ref. GW10 02 04 02**  
Fuente agua fría mural con pulsador 35l/h  
*Wall mounted cold water jet operated with push-button 35l/h*

1011,00 €



**Ref. GW10 03 04 02**  
Fuente agua fría con llenavaso y pulsador 30l/h  
*Cold water jet operated by push-button, cup-filler 30l/h*

902,90 €



**Ref. GW10 14 04 02**  
Fuente agua fría con llenavaso y pulsador 30l/h / sin llenavaso  
*Cold water jet operated by push-button, 30l/h, without cup-filler*

855,15 €



**Ref. GW10 04 04 02**  
Fuente agua natural para exterior  
*Outdoor water jet*

553,30 €



**Ref. GW10 01 90 00**  
Recambio llenavaso  
*Water dispenser glassfiller spare part*

52,10 €



**Ref. GW10 01 90 01**  
Recambio Pulsador  
*Water dispenser pushbutton spare part*

51,60 €



**Ref. GW11 01 90 02**  
Kit anticonductivo para asientos  
*Flange isolation kit for seats*

6,65 €



**Ref. GW10 06 01 00**  
Filtro opcional de plástico para GW10 01 y GW10 02  
*Optional plastic filter for models GW10 01 and GW10 02*

105,60 €



**Ref. GW11 01 90 03**  
Kit anticonductivo para barra abatible con pie  
*Flange isolation kit for folding bar with leg support*

9,15 €



**Ref. GW10 07 01 00**  
Cartucho recambio para filtros GW10 05 and GW10 06  
*Replacement cartridge for filters GW10 05 and GW10 06*

31,90 €



**Ref. GW11 01 03 00**  
Barra recta 300mm acero blanco  
*Straight bar 300mm white steel*

22,80 €



**Ref. GW10 08 01 00**  
Filtro opcional para GW10 03  
*Optional filter for GW10 03*

37,15 €



**Ref. GW11 02 03 00**  
Barra recta 400mm acero blanco  
*Straight bar 400mm white steel*

26,95 €



**Ayudas técnicas a la movilidad**  
*Grab bars & technical mobility supports*



**Ref. GW11 03 03 00**  
Barra recta 600mm acero blanco  
*Straight bar 600mm white steel*

32,15 €



**Ref. GW11 01 90 00**  
Kit anticonductivo para barras rectas  
*Flange isolation kit for straight bars*

2,50 €



**Ref. GW11 04 03 00**  
Barra recta 750mm acero blanco  
*Straight bar 750mm white steel*

35,95 €



**Ref. GW11 01 90 01**  
Kit anticonductivo para barras abatibles  
*Flange isolation kit for folding bars*

8,40 €



**Ref. GW11 05 03 00**  
Barra recta 900mm acero blanco  
*Straight bar 900mm white steel*

41,05 €



**Ref. GW11 06 03 00**  
Barra recta 1200mm acero blanco  
*Straight bar 1200mm white steel*

50,90 €



**Ref. GW11 01 04 02**  
Barra recta 300mm inox brillante  
*Straight bar 300mm polished stainless steel*

37,25 €



**Ref. GW11 01 04 01**  
Barra recta 300mm inox satinada  
*Straight bar 300mm brushed stainless steel*

32,45 €



**Ref. GW11 02 04 02**  
Barra recta 400mm inox brillante  
*Straight bar 400mm polished stainless steel*

40,20 €



**Ref. GW11 02 04 01**  
Barra recta 400mm inox satinada  
*Straight bar 400mm brushed stainless steel*

34,85 €



**Ref. GW11 03 04 02**  
Barra recta 600mm inox brillante  
*Straight bar 600mm polished stainless steel*

48,85 €



**Ref. GW11 03 04 01**  
Barra recta 600mm inox satinada  
*Straight bar 600mm brushed stainless steel*

43,20 €



**Ref. GW11 04 04 02**  
Barra recta 750mm inox brillante  
*Straight bar 750mm polished stainless steel*

52,45 €



**Ref. GW11 04 04 01**  
Barra recta 750mm inox satinada  
*Straight bar 750mm brushed stainless steel*

47,35 €



**Ref. GW11 05 04 02**  
Barra recta 900mm inox brillante  
*Straight bar 900mm polished stainless steel*

61,45 €



**Ref. GW11 05 04 01**  
Barra recta 900mm inox satinada  
*Straight bar 900mm brushed stainless steel*

55,35 €



**Ref. GW11 06 04 02**  
Barra recta 1200mm inox brillante  
*Straight bar 1200mm polished stainless steel*

79,45 €



**Ref. GW11 06 04 01**  
Barra recta 1200mm inox satinada  
*Straight bar 1200mm brushed stainless steel*

70,35 €



**Ref. GW11 07 03 00**  
Barra abatible 800mm portarollos  
acero blanco  
*Folding bar 800mm w/paper dispenser white steel*

103,45 €



**Ref. GW11 07 04 01**  
Barra abatible 800mm portarollos inox satinado  
Folding bar 800mm w/paper dispenser stainless steel brushed

133,40 €



**Ref. GW11 07 04 02**  
Barra abatible 800mm portarollos inox brillante  
Folding bar 800mm w/paper dispenser stainless steel polished

151,95 €



**Ref. GW11 08 03 00**  
Barra abatible 600mm portarollos acero blanco  
Folding bar 600mm w/paper dispenser white steel

100,10 €



**Ref. GW11 08 04 01**  
Barra abatible 600mm portarollos inox satinado  
Folding bar 600mm w/paper dispenser stainless steel brushed

130,80 €



**Ref. GW11 08 04 02**  
Barra abatible 600mm portarollos inox brillante  
Folding bar 600mm w/paper dispenser stainless steel polished

143,80 €



**Ref. GW11 60 03 00**  
Barra abatible 800mm con pata a suelo acero blanco  
Folding bar 800mm with leg support steel white

89,00 €



**Ref. GW11 60 04 01**  
Barra abatible 800mm con pata a suelo inox satinado  
Folding bar 800mm with leg support stainless steel brushed

122,65 €



**Ref. GW11 09 03 00**  
Barra abatible 750mm columna acero blanco  
Folding bar 750mm floor support white steel

195,15 €



**Ref. GW11 09 04 01**  
Barra abatible 750mm columna inox satinada  
Folding bar 750mm floor support stainless steel brushed

265,55 €



**Ref. GW11 09 04 02**  
Barra abatible 750mm columna inox brillante  
Folding bar 750mm floor support stainless steel polished

282,05 €



**Ref. GW11 10 03 00**  
Barra fija 3 anclajes acero blanco izquierda  
Grab bar with left support white steel

96,05 €



**Ref. GW11 10 04 01**  
Barra fija 3 anclajes inox satinada izquierda  
Grab bar with left support stainless steel brushed

117,25 €



**Ref. GW11 10 04 02**  
Barra fija 3 anclajes inox brillante izquierda  
Grab bar with left support stainless steel polished

135,45 €



**Ref. GW11 11 03 00**  
Barra fija 3 anclajes acero blanco derecha  
Grab bar with right support white steel

96,05 €



**Ref. GW11 11 04 01**

Barra fija 3 anclajes inox satinada derecha  
*Grab bar with right support stainless steel brushed*

117,25 €

**Ref. GW11 11 04 02**

Barra fija 3 anclajes inox brillante derecha  
*Grab bar with right support stainless steel polished*

135,45 €

**Ref. GW11 12 03 00**

Barra 90° pared a suelo acero blanco izquierda  
*Wall to floor 90° grab bar white steel left*

133,85 €

**Ref. GW11 12 04 01**

Barra 90° pared a suelo inox satinada izquierda  
*Wall to floor 90° grab bar stainless steel brushed left*

150,85 €

**Ref. GW11 12 04 02**

Barra 90° pared a suelo inox brillante izquierda  
*Wall to floor 90° grab bar stainless steel polished left*

168,35 €

**Ref. GW11 13 03 00**

Barra 90° pared a suelo acero blanco derecha  
*Wall to floor 90° grab bar white steel right*

133,85 €

**Ref. GW11 13 04 01**

Barra 90° pared a suelo inox satinada derecha  
*Wall to floor 90° grab bar stainless steel brushed right*

150,85 €

**Ref. GW11 13 04 02**

Barra 90° pared a suelo inox brillante derecha  
*Wall to floor 90° grab bar stainless steel polished right*

168,35 €

**Ref. GW11 14 03 00**

Barra 90° pared a suelo acero blanco  
*Wall to floor 90° grab bar white steel*

83,35 €

**Ref. GW11 14 04 01**

Barra 90° pared a suelo inox satinada  
*Wall to floor 90° grab bar stainless steel brushed*

103,10 €

**Ref. GW11 14 04 02**

Barra 90° pared a suelo inox brillante  
*Wall to floor 90° grab bar stainless steel polished*

112,55 €

**Ref. GW11 22 03 00**

Manillón 300x300mm acero blanco  
*Angled grab bar 300x300mm white steel*

45,40 €

**Ref. GW11 22 04 01**

Manillón 300x300mm inox satinado  
*Angled grab bar 300x300mm stainless steel brushed*

57,10 €

**Ref. GW11 22 04 02**

Manillón 300x300mm inox brillante  
*Angled grab bar 300x300mm stainless steel polished*

63,05 €

**Ref. GW11 15 03 00**

Barra 90° pared acero blanco  
izquierda  
*90° wall grab bar white steel left*

83,15 €

**Ref. GW11 15 04 01**

Barra 90° pared inox satinado  
izquierda  
*90° wall grab bar stainless steel  
brushed left*

108,00 €

**Ref. GW11 15 04 02**

Barra 90° pared inox brillante  
izquierda  
*90° wall grab bar stainless steel  
polished left*

115,15 €

**Ref. GW11 16 03 00**

Barra 90° pared acero blanco derecha  
*90° wall grab bar white steel right*

83,15 €

**Ref. GW11 16 04 01**

Barra 90° pared inox satinado derecha  
*90° wall grab bar stainless steel  
brushed right*

108,00 €

**Ref. GW11 16 04 02**

Barra 90° pared inox brillante derecha  
*90° wall grab bar stainless steel  
polished right*

115,15 €

**Ref. GW11 17 03 00**

Barra 90° 600x600 acero blanco  
*Wall to wall 600x600 grab bar white  
steel*

83,15 €

**Ref. GW11 17 04 01**

Barra 90° 600x600 inox satinada  
*Wall to wall 600x600 grab bar stainless  
steel brushed*

98,35 €

**Ref. GW11 17 04 02**

Barra 90° 600x600 inox brillante  
*Wall to wall 600x600 grab bar stainless  
steel polished*

104,75 €

**Ref. GW11 18 03 00**

Barra 90° 700x700 acero blanco  
*Wall to wall 700x700 grab bar white  
steel*

84,65 €

**Ref. GW11 18 04 01**

Barra 90° 700x700 inox satinada  
*Wall to wall 700x700 grab bar stainless  
steel brushed*

103,35 €

**Ref. GW11 18 04 02**

Barra 90° 700x700 inox brillante  
*Wall to wall 700x700 grab bar stainless  
steel polished*

113,65 €

**Ref. GW11 20 03 00**

Barra pared 3 brazos acero blanco  
izquierda  
*3 sides grab bar white steel left*

129,40 €

**Ref. GW11 20 04 01**

Barra pared 3 brazos inox satinada  
izquierda  
*3 sides grab bar stainless steel brushed  
left*

155,40 €

**Ref. GW11 20 04 02**

Barra pared 3 brazos inox brillante  
izquierda  
*3 sides grab bar stainless steel  
polished left*

173,85 €

**Ref. GW11 21 03 00**

Barra pared 3 brazos acero blanco  
derecha  
*3 sides grab bar white steel derecha*

129,40 €

**Ref. GW11 21 04 01**

Barra pared 3 brazos inox satinada  
derecha  
*3 sides grab bar stainless steel brushed  
derecha*

155,40 €

**Ref. GW11 21 04 02**

Barra pared 3 brazos inox brillante  
derecha  
*3 sides grab bar stainless steel  
polished derecha*

173,85 €

**NEW****Ref. GW11 10 01 01**

Soporte Ducha ABS cromado satinado  
*Shower holder ABS chrome brush  
finished*

21,30 €

**Ref. GW11 23 11 00**

Asiento abatible fenólico acabado  
satinado  
*Phenolic folding seat brushed*

260,45 €

**Ref. GW11 24 03 00**

Asiento abatible con pata acero  
blanco  
*Folding seat with leg support steel  
white*

208,15 €

**Ref. GW11 24 04 01**

Asiento abatible con pata acero inox  
satinado  
*Folding seat with leg support 304  
stainless steel brushed*

257,00 €

**Ref. GW11 24 11 00**

Asiento abatible con pata fenólico  
acabado satinado  
*Phenolic folding seat with leg support  
brushed*

257,00 €

**NEW****Ref. GW11 10 01 02**

Soporte Ducha ABS cromado brillante  
*Shower holder ABS chrome polish  
finished*

20,95 €

**Ref. GW11 23 03 00**

Asiento abatible acero blanco  
*Folding seat steel white*

219,00 €

**Ref. GW11 26 09 00**

Barra recta nylon 450mm  
*Straight bar 450mm nylon*

41,35 €

**Ref. GW11 23 04 01**

Asiento abatible inox satinado  
*Folding seat 304 stainless steel  
brushed*

253,00 €

**Ref. GW11 27 09 00**

Barra recta nylon 600mm  
*Straight bar 600mm nylon*

52,45 €



**Ref. GW11 28 09 00**  
Barra recta nylon 750mm  
*Straight bar 750mm nylon*

56,25 €



**Ref. GW11 35 09 00**  
Barra soporte ducha nylon 3 brazos  
*3 sides shower grab bar nylon*

175,50 €



**Ref. GW11 29 09 00**  
Barra recta nylon 1050mm  
*Straight bar 1050mm nylon*

74,25 €



**Ref. GW11 36 09 00**  
Barra 90° pared-pared 815x815mm  
*Wall to wall 90° grab bar 815x815mm*

102,45 €



**Ref. GW11 30 09 00**  
Barra abatible nylon 700mm, base inox  
*Folding bar 700mm nylon, stainless steel wall support*

186,35 €



**Ref. GW11 38 09 00**  
Asiento abatible nylon, base inox  
*Folding seat nylon, stainless steel wall support*

261,00 €



**Ref. GW11 31 09 00**  
Barra abatible nylon con pata 700mm, base inox  
*Folding bar with support leg 700mm nylon, stainless steel wall support*

222,50 €



**Ref. GW11 61 09 00**  
Asiento ducha nylon para enganchar a barra  
*Nylon Shower seat to hang on grab bar*

236,15 €



**Ref. GW11 32 09 00**  
Manillón nylon 300x300mm  
*Angled grab bar 300x300mm*

62,65 €



**Ref. GW11 62 09 00**  
Barra nylon 90° 400x600mm  
*Nylon 90° grab bar 400x600mm*

109,75 €



**Ref. GW11 33 09 00**  
Barra nylon fija tres anclajes izquierda 700mm  
*Grab bar with left support 700mm nylon*

127,45 €



**Ref. GW11 39 09 00**  
Asiento abatible nylon con pata de apoyo, base inox  
*Folding seat nylon with support leg, stainless steel wall support*

267,65 €



**Ref. GW11 34 09 00**  
Barra nylon fija tres anclajes derecha 700mm  
*Grab bar with right support 700mm nylon*

127,45 €



**Ref. GW11 40 09 00**  
Taburete nylon 450mm altura con apoya brazos  
*Stool 450mm height nylon with arms support*

376,60 €



**Ref. GW11 41 09 00**  
Espejo reclinable con soporte nylon  
*Retractable mirror with nylon fixing*

142,50 €



**Ref. GW11 48 01 00**  
Cisterna en ABS con mando  
pneumático de encastre a pared  
*ABS cistern with recessed pneumatic  
flush on wall*

189,60 €



**Ref. GW11 37 09 00**  
Toallero nylon  
*Towel bar nylon*

33,00 €



**Ref. GW11 64 01 00**  
Cisterna en ABS con mando  
neumático en cisterna  
*ABS cistern with pneumatic flush on  
cistern*

189,60 €



**Ref. GW11 42 07 00**  
Inodoro porcelana con apertura  
higiénica salida suelo  
*Chinese porcelain toilet with hygienic  
opening floor outlet*

243,30 €



**Ref. GW11 77 04 01**  
Respaldo de espuma de poliuretano  
blanco  
*White polyurethane foam backrest*

140,45 €



**Ref. GW11 43 07 00**  
Inodoro porcelana con apertura  
higiénica salida pared  
*Chinese porcelain toilet with hygienic  
opening*

243,30 €



**Ref. GW11 49 07 00**  
Lavabo ergonómico porcelana  
*Chinese porcelain ergonomic  
washbasin*

244,10 €



**Ref. GW11 44 07 00**  
Inodoro mural porcelana con apertura  
higiénica  
*Wall hanging chinese porcelain toilet  
with hygienic opening*

314,75 €



**Ref. GW11 50 03 00**  
Ménsula fija para lavabo  
*Fixed brackets for washbasin*

78,80 €



**Ref. GW11 47 01 00**  
Asiento con apertura higiénica para  
GW11 42 y GW11 43  
*Ergonomic toilet seat for GW11 42 &  
GW11 43*

102,90 €



**Ref. GW11 51 03 00**  
Ménsula con inclinación manual para  
lavabo  
*Manual reclining mechanism for  
washbasin*

178,75 €



**Ref. GW11 63 01 00**  
Asiento con apertura higiénica para  
GW11 44  
*Ergonomic toilet seat for GW11 44*

105,50 €



**Ref. GW11 52 03 00**  
Ménsula con barra de control con  
mando neumático  
*Pneumatic reclining mechanism for  
washbasin*

339,90 €



**Ref. GW11 53 01 00**  
Sifón flexible para lavabo  
*Flexible siphon for washbasin*

87,25 €



**Ref. GW11 70 04 01**  
Espejo con marco de acero inoxidable  
304 800x600 mm  
*Mirror with 304 stainless steel frame  
800x600 mm*

173,85 €



**Ref. GW11 54 06 02**  
Monomando medical mezclador  
*Medical single-lever mixer*

88,35 €



**Ref. GW11 71 04 01**  
Kit para reclinarse espejo GW11 69  
*Tilt kit for mirror GW11 69*

48,20 €



**Ref. GW11 58 12 00**  
Plato de ducha encastrado en  
vitraresina 800x800  
*Built-in fiberglass shower pan 800x800*

287,70 €



**Ref. GW11 72 04 01**  
Kit para reclinarse espejo GW11 70  
*Tilt kit for mirror GW11 70*

53,10 €



**Ref. GW11 59 12 00**  
Plato de ducha encastrado en  
vitraresina 900x900  
*Built-in fiberglass shower pan 900x900*

300,75 €



**Lavaojos y duchas de emergencia**  
*Eye washers & emergency showers*



**Ref. GW11 65 06 02**  
Desagüe sifónico para plato de ducha  
*Syphon drain for shower pan*

92,80 €



**Ref. GW12 01 03 05**  
Lavaojos mural, recogedor de  
polipropileno  
*Wall hung eye washer, polipropilene  
bowl*

541,40 €



**Ref. GW11 66 02 00**  
Espejo basculante con marco de  
aluminio pintado en blanco  
*Tilting mirror with white painted  
aluminium frame*

206,55 €



**Ref. GW12 01 04 05**  
Lavaojos mural, recogedor inox  
*Wall mounted eye washer, stainless steel  
bowl*

698,15 €



**Ref. GW11 69 04 01**  
Espejo con marco de acero inoxidable  
304 700x500 mm  
*Mirror with 304 stainless steel frame  
700x500 mm*

156,50 €



**Ref. GW12 02 03 05**  
Lavaojos con pedestal, recogedor de  
polipropileno  
*Floor mounted eye washer,  
polipropilene bowl*

760,00 €



**Ref. GW12 02 04 05**  
 Lavaojos con pedestal, recogedor inox  
*Floor mounted eye washer, stainless steel bowl*

951,95 €



**Ref. GW12 03 03 05**  
 Lavaojos con pedestal doble mando, recogedor polipropileno  
*Floor mounted eye washer with foot pedal, polypropylene bowl*

791,80 €



**Ref. GW12 03 04 05**  
 Lavaojos con pedestal doble mando, recogedor inox  
*Floor mounted eye washer with foot pedal, stainless steel bowl*

988,85 €



**Ref. GW12 04 03 05**  
 Ducha y lavaojos doble mando, complementos en polipropileno  
*Shower and eye washer, polypropylene shower head and bowl*

1502,45 €



**Ref. GW12 04 04 05**  
 Ducha y lavaojos doble mando, complementos en inox  
*Shower and eye washer, stainless steel shower head and bowl*

1597,20 €



**Ref. GW12 05 03 05**  
 Ducha y lavaojos triple mando, complementos en polipropileno  
*Shower and eye washer, polypropylene shower head and bowl*

1511,15 €



**Ref. GW12 05 04 05**  
 Ducha y lavaojos triple mando, complementos en inox  
*Shower and eye washer, stainless steel shower head and bowl*

1750,95 €



## Grifería temporizada Timed taps



**NEW**

**Ref. GW13 11 06 02**  
 Grifo lavabo electrónico mezclador con batería  
*Electronic basin mixer tap with battery*

263,40 €



**NEW**

**Ref. GW13 10 06 02**  
 Grifo lavabo electrónico  
*Electronic basin mixer tap*

269,90 €



**NEW**

**Ref. GW13 12 06 02**  
 Dosificador jabón lavabo encastrado con batería  
*Electronic undercounter soap dispenser*

265,70 €



**Ref. GW13 01 06 02**  
 Grifo lavabo encimera temporizado  
*Countertop washbasin timed tap*

58,85 €



**Ref. GW13 03 06 02**  
 Grifo lavabo mural temporizado  
*Wall mounted washbasin timed tap*

49,20 €



**Ref. GW13 02 06 02**  
 Grifo urinal mural temporizado  
*Wall mounted urinal timed tap*

42,65 €



**Ref. GW13 04 06 02**  
Grifo urinario empotrado temporizado  
*Built-in urinal timed tap*

50,80 €



**Ref. GW13 05 06 02**  
Grifo ducha empotrado  
*Built-in shower timed tap*

50,80 €



**Ref. GW13 08 06 02**  
Accesorio para urinario curvo de 15,5 cm  
*Curved 15,5 cm urinal connector*

11,85 €



**Ref. GW13 09 06 02**  
Rociador para ducha antivandálico con rótula  
*Anti vandalism shower sprayer with ball*

101,90 €



**NEW**  
**Ref. GW13 15 06 02**  
Válvula de ducha empotrada con sensor  
*Built-in sensor shower valve*

293,35 €



**NEW**  
**Ref. GW13 13 06 02**  
Válvula de urinario con sensor  
*Automatic urinal valve*

236,25 €



**NEW**  
**Ref. GW13 14 06 02**  
Válvula de urinario empotrada con sensor  
*Built-in sensor urinal valve*

297,25 €



**Ref. GW13 06 06 02**  
Accesorio para urinario recto de 15,5 cm  
*Straight 15,5 cm urinal connector*

11,10 €



**Ref. GW13 07 06 02**  
Accesorio para urinario recto de 40 cm  
*Straight 40 cm urinal connector*

16,75 €



**Exterminadores de insectos**  
*Insect killers*



**Ref. GW14 01 03 00**  
Exterminador de insectos de 15W  
*Glueboard insect killer 15W*

132,95 €



**Ref. GW14 02 01 00**  
Recambio adhesivo para GW14 01 (4 unidades)  
*Replacement glueboard for GW14 01 (4 units)*

44,65 €



**Ref. GW14 03 04 02**  
Exterminador insectos 2x11W en acero inoxidable  
*Wall mounted killer 2x11W in stainless steel*

229,00 €



**Ref. GW14 04 04 02**  
Exterminador insectos 2x40W en acero inoxidable  
*Wall mounted insect killer 2x40W in stainless steel*

376,50 €







**Especial Productos Sin Contacto** Non Contact Special Products

REF: P.:

GW01 28 02 00 NEW	3
GW01 28 02 03 NEW	3
GW01 28 04 01 NEW	3
GW01 28 04 02 NEW	3
GW01 28 90 01 NEW	3
GW04 15 01 00 NEW	3
GW04 15 01 00CB NEW4	
GW04 15 01 00CN NEW4	
GW04 15 01 00SB	3
GW04 15 01 00SC	4
GW04 15 01 00SM	3
GW04 15 01 00SN	3
GW04 15 01 00ST	3
GW04 16 01 00	3
GW04 16 01 00CB	4
GW04 16 01 00CN	4
GW04 16 01 00SB	4
GW04 16 01 00SC	4
GW04 16 01 00SM	3
GW04 16 01 00SN	4
GW04 16 01 00ST	4

GW04 17 01 00	3
GW04 18 04 02	4
GW13 49 01 00	4
GW13 50 01 00	4



**Especial Productos Acabados Black**

REF: P.:

GW02 08 01 03 NEW	5
GW03 02 04 03 NEW	4
GW03 04 04 03 NEW	5
GW03 05 04 03 NEW	5
GW04 21 04 03 NEW	5
GW05 30 06 03 NEW	6
GW05 55 04 03 NEW	5
GW05 56 04 03 NEW	5
GW05 57 04 03 NEW	5
GW05 58 04 03 NEW	5
GW05 59 04 03 NEW	5
GW05 60 04 03 NEW	5
GW05 61 04 03 NEW	5
GW05 62 04 03 NEW	5
GW05 63 04 03 NEW	5
GW05 64 04 03 NEW	6
GW05 65 04 03 NEW	6

GW05 66 04 03 NEW	6
GW05 67 04 03 NEW	6
GW06 14 04 03 NEW	5



**Secamanos** Hand dryer

REF: P.:

GW01 02 02 00 NEW	6
GW01 02 02 03 NEW	7
GW01 02 04 01 NEW	6
GW01 02 04 02 NEW	6
GW01 03 02 00 NEW	7
GW01 03 02 01	7
GW01 03 02 02	7
GW01 03 02 03	7
GW01 03 04 01	7
GW01 03 04 02	7
GW01 04 02 00	7
GW01 04 02 01	7
GW01 04 02 02	7
GW01 04 02 03	7
GW01 04 04 01	7
GW01 04 04 02	7
GW01 12 02 00	8
GW01 12 02 00V1	8
GW01 12 02 02	9

GW01 12 02 04	8
GW01 12 02 04V1	9
GW01 14 01 00	9
GW01 14 01 00V1	9
GW01 14 03 00	9
GW01 14 03 00V1	9
GW01 14 04 01	9
GW01 14 04 01V1	9
GW01 14 04 02	10
GW01 15 01 00	8
GW01 15 01 04	8
GW01 15 01 04V1	8
GW01 18 04 00	8
GW01 18 04 01 <b>NEW</b>	8
GW01 18 04 03	8
GW01 19 03 00	7
GW01 19 04 01	8
GW01 19 04 02	8
GW01 20 03 00	8
GW01 20 04 01	8
GW01 20 04 02	8
GW01 25 03 00	9
GW01 25 04 01	9
GW01 25 04 02	9
GW01 26 03 00	9
GW01 26 04 01	9
GW01 26 04 02	9
GW01 28 02 00	6
GW01 28 02 03	6
GW01 28 04 01	6
GW01 28 04 02	6
GW01 28 90 01	6



### Secadores de pelo Hair dryers

REF: P.:

GW02 01 01 00	10
GW02 02 01 00	10
GW02 03 01 00	10
GW02 03 01 00V1	10
GW02 03 01 03	10
GW02 06 03 00 <b>NEW</b>	10
GW02 06 04 01 <b>NEW</b>	10
GW02 06 04 02 <b>NEW</b>	10
GW02 08 01 00 <b>NEW</b>	10
GW02 08 01 00B	10
GW02 08 01 03	10
GW02 08 01 03B	10



### Dispensadores de papel Paper dispensers

REF: P.:

GW03 02 04 01	11
GW03 02 04 02	11

GW03 02 04 03 <b>NEW</b>	11
GW03 03 03 00	11
GW03 03 04 01	11
GW03 03 04 02	11
GW03 04 04 01	11
GW03 04 04 02	11
GW03 04 04 03 <b>NEW</b>	11
GW03 05 04 01	11
GW03 05 04 02	11
GW03 05 04 03 <b>NEW</b>	11
GW03 08 04 01 <b>NEW</b>	12
GW03 08 04 02 <b>NEW</b>	12
GW03 09 04 02 <b>NEW</b>	12
GW03 10 04 02	12
GW03 11 04 02	12
GW03 12 04 01	12
GW03 13 04 01	12
GW03 14 03 00	12
GW03 14 04 01	12
GW03 14 04 02	12
GW03 15 04 01	12
GW03 16 04 02	12
GW03 18 01 00	13
GW03 18 01 04	13
GW03 19 01 00	13
GW03 19 01 04	13
GW03 20 01 00	13
GW03 20 01 04	13
GW03 21 01 00	13
GW03 21 01 04	13
GW03 24 04 01	11
GW03 25 04 01	13
GW03 25 04 02	13

GW03 27 04 01	12
GW03 28 04 01	12



## Dosificadores de jabón

Soap dispensers

REF: P.:

GW04 01 04 01	13
GW04 01 04 01B	NEW 13
GW04 01 04 02	13
GW04 01 04 02B	NEW 14
GW04 02 04 01	14
GW04 02 04 02	14
GW04 06 04 01	14
GW04 06 04 02	14
GW04 08 01 00	15
GW04 09 01 00	NEW 14
GW04 09 04 02	14
GW04 10 01 00	14
GW04 10 01 00B	14
GW04 12 01 00	15
GW04 12 01 04	NEW 15
GW04 13 01 00	15
GW04 13 01 04	NEW 15
GW04 14 01 00	NEW 15
GW04 14 01 04	NEW 15
GW04 15 01 00	15
GW04 15 04 02	14

GW04 16 01 00	15
GW04 16 01 03	15
GW04 16 01 04	15
GW04 17 01 00	15
GW04 20 04 01	NEW 14
GW04 20 04 02	NEW 14
GW04 21 04 01	NEW 14
GW04 21 04 03	NEW 14



## Accesorios de baño

Washroom accessories

REF: P.:

GW05 01 04 01	17
GW05 01 04 01B	NEW 18
GW05 01 05 02	15
GW05 01 05 02B	16
GW05 01 06 02	20
GW05 02 04 01	18
GW05 02 05 02	16
GW05 02 06 02	20
GW05 03 04 01	18
GW05 03 05 02	16
GW05 03 06 02	20
GW05 04 04 01	18
GW05 04 05 02	16
GW05 04 06 02	21
GW05 05 04 01	NEW 18

GW05 05 05 02	NEW 16
GW05 05 06 02	NEW 21
GW05 06 04 01	NEW 18
GW05 06 05 02	NEW 16
GW05 06 06 02	NEW 21
GW05 07 04 01	NEW 18
GW05 07 05 02	NEW 16
GW05 07 06 02	NEW 21
GW05 08 04 01	NEW 18
GW05 08 05 02	NEW 16
GW05 08 06 02	NEW 21
GW05 09 04 01	NEW 18
GW05 09 05 02	NEW 16
GW05 09 06 02	21
GW05 10 04 01	NEW 18
GW05 10 05 02	16
GW05 10 06 02	21
GW05 11 04 01	18
GW05 11 05 02	16
GW05 11 06 02	21
GW05 12 04 01	18
GW05 12 05 02	16
GW05 12 06 02	21
GW05 13 04 01	18
GW05 13 04 01B	19
GW05 13 05 02	16
GW05 13 06 02	21
GW05 14 04 01	19
GW05 14 06 02	NEW 21
GW05 15 04 01	19
GW05 15 06 02	21
GW05 16 04 01	19
GW05 16 06 02	21

GW05 17 04 01	19
GW05 17 06 02	22
GW05 18 04 01	19
GW05 18 06 02	22
GW05 19 04 01	19
GW05 19 06 02	22
GW05 20 04 01	19
GW05 20 06 02 <b>NEW</b>	22
GW05 21 04 01 <b>NEW</b>	19
GW05 21 06 02 <b>NEW</b>	22
GW05 22 04 01 <b>NEW</b>	19
GW05 22 06 02 <b>NEW</b>	22
GW05 23 04 01 <b>NEW</b>	19
GW05 23 06 02 <b>NEW</b>	22
GW05 24 04 01 <b>NEW</b>	19
GW05 24 06 02 <b>NEW</b>	22
GW05 25 04 01 <b>NEW</b>	18
GW05 25 04 02 <b>NEW</b>	22
GW05 26 06 02 <b>NEW</b>	22
GW05 27 04 02 <b>NEW</b>	22
GW05 28 04 02	22
GW05 28 06 02	21
GW05 29 04 02	23
GW05 30 06 02	23
GW05 30 06 03	23
GW05 31 06 02	23
GW05 32 05 02	23
GW05 33 05 01	23
GW05 37 04 02	23
GW05 38 04 01	23
GW05 38 06 02	23
GW05 39 06 02	23
GW05 40 04 02	16

GW05 40 04 02B	17
GW05 41 04 02	17
GW05 42 04 02	17
GW05 43 04 02	17
GW05 44 04 02	17
GW05 45 04 02	17
GW05 46 04 02	17
GW05 47 04 02	17
GW05 48 04 02	17
GW05 49 04 02	17
GW05 50 04 02	17
GW05 51 04 02	17
GW05 52 04 02	17
GW05 53 04 02	22
GW05 54 04 02	22
GW05 54 06 02 <b>NEW</b>	23
GW05 55 04 03 <b>NEW</b>	19
GW05 56 04 03	19
GW05 57 04 03	20
GW05 58 04 03 <b>NEW</b>	20
GW05 59 04 03	20
GW05 60 04 03 <b>NEW</b>	20
GW05 61 04 03 <b>NEW</b>	20
GW05 62 04 03	20
GW05 63 04 03 <b>NEW</b>	20
GW05 64 04 03	20
GW05 65 04 03 <b>NEW</b>	20
GW05 66 04 03	20
GW05 67 04 03	20



## Papeleras Wastepaper bins

REF: P.:

GW06 01 04 01	23
GW06 01 04 02	24
GW06 02 03 03	24
GW06 02 04 01	23
GW06 02 04 02	24
GW06 03 04 01	24
GW06 03 04 02	24
GW06 04 04 01	24
GW06 04 04 02 <b>NEW</b>	24
GW06 06 04 01	24
GW06 07 04 01	24
GW06 10 04 02	24
GW06 12 02 01	24
GW06 13 04 01	25
GW06 14 04 01 <b>NEW</b>	25
GW06 14 04 03 <b>NEW</b>	24
GW06 15 04 01 <b>NEW</b>	25
GW06 16 02 01 <b>NEW</b>	25
GW06 17 02 01	25
GW06 17 04 01	24
GW06 18 02 01	25
GW06 19 04 01	25
GW06 20 04 01	25
GW06 24 04 01	24
GW06 27 02 01	25
GW06 37 04 02	25

GW06 37 04 02T NEW25

---



**Cambiapañales** Baby  
changing stations

REF: P.:

GW07 02 01 00 NEW 26

GW07 03 04 02 NEW 26

GW07 04 04 02 26

GW07 05 01 00 25

GW07 05 04 01 25

---



**Sanitarios acero  
inoxidable** Stainless steel  
sanitary products

REF: P.:

GW08 11 04 02 26

GW08 12 04 02 26

GW08 13 04 02 26

GW08 14 04 02 26

GW08 15 04 02 26

GW08 16 04 02 26

GW08 17 04 02 26

GW08 18 04 02 26

GW08 19 04 02 26

GW08 20 04 02 26

GW08 21 04 02 27

GW08 22 04 02 27

GW08 23 06 02 27

GW08 24 06 02 27

GW08 25 04 01 NEW 27

GW08 26 04 01 NEW 27

GW08 27 04 01 NEW 27

GW08 35 04 01 NEW 28

GW08 36 04 01 NEW 28

GW08 37 04 01 28

GW08 38 04 01 28

GW08 39 04 01 28

GW08 40 04 01 28

GW08 41 04 01 28

GW08 42 04 01 28

GW08 43 04 01 28

GW08 44 04 01 28

GW08 45 04 01 28

GW08 46 04 01 29

GW08 47 04 01 28

GW08 48 04 01 28

GW08 49 04 01 28

GW08 50 04 01 29

GW08 51 04 01 29

GW08 52 04 01 29

GW08 53 04 01 27

GW08 54 04 01 27

GW08 55 04 01 29

GW08 56 04 01 29

GW08 57 04 01 29

GW08 58 04 01 29

GW08 59 04 01 29

GW08 60 04 01 NEW 29

GW08 61 04 01 29

GW08 62 04 01 29

GW08 63 04 01 30

GW08 64 04 01 30

GW08 68 04 01 30

GW08 69 04 01 30

GW08 70 01 00 29

GW08 70 04 01 30

GW08 70 04 02 27

GW08 71 04 01 30

GW08 71 04 02 27

GW08 72 04 01 27

GW08 73 04 01 30

GW08 74 04 01 30

GW08 75 04 01 NEW 30

GW08 84 04 01 NEW 29

GW08 86 04 01 27

GW08 90 04 01 27

---



**Muebles compactos**  
Compact furniture

REF: P.:

GW09 01 04 01 30

GW09 02 04 01 30

GW09 03 04 01	31
GW09 07 04 01	30
GW09 08 04 01	30
GW09 09 04 01	31
GW09 11 04 01	31
GW09 12 04 01	31
GW09 13 04 01	31
GW09 14 04 01	31
GW09 15 04 01	31



## Fuentes de agua Water dispensers

REF: P.:

GW10 01 04 02	31
GW10 01 90 00	31
GW10 01 90 01	32
GW10 02 04 02	31
GW10 03 04 02	31
GW10 04 04 02	31
GW10 06 01 00	32
GW10 07 01 00	32
GW10 08 01 00	32
GW10 14 04 02	31



## Ayudas técnicas a la movilidad Grab bars & technical mobility supports

REF: P.:

GW11 01 03 00	32
GW11 01 04 01	33
GW11 01 04 02	33
GW11 01 90 00	32
GW11 01 90 01	32
GW11 01 90 02	32
GW11 01 90 03	32
GW11 02 03 00	32
GW11 02 04 01	33
GW11 02 04 02	33
GW11 03 03 00	32
GW11 03 04 01	33
GW11 03 04 02	33
GW11 04 03 00	32
GW11 04 04 01	33
GW11 04 04 02	33
GW11 05 03 00	32
GW11 05 04 01	33
GW11 05 04 02	33
GW11 06 03 00	33
GW11 06 04 01	33
GW11 06 04 02	33
GW11 07 03 00	33
GW11 07 04 01	34
GW11 07 04 02	34
GW11 08 03 00	34

GW11 08 04 01	34
GW11 08 04 02	34
GW11 09 03 00	34
GW11 09 04 01	34
GW11 09 04 02	34
GW11 10 01 01	37
GW11 10 01 02	37
GW11 10 03 00	34
GW11 10 04 01	34
GW11 10 04 02	34
GW11 11 03 00	34
GW11 11 04 01	35
GW11 11 04 02	35
GW11 12 03 00	35
GW11 12 04 01	35
GW11 12 04 02	35
GW11 13 03 00	35
GW11 13 04 01	35
GW11 13 04 02	35
GW11 14 03 00	35
GW11 14 04 01	35
GW11 14 04 02	35
GW11 15 03 00	36
GW11 15 04 01	36
GW11 15 04 02	36
GW11 16 03 00	36
GW11 16 04 01	36
GW11 16 04 02	36
GW11 17 03 00	36
GW11 17 04 01	36
GW11 17 04 02	36
GW11 18 03 00	36
GW11 18 04 01	36

GW11 18 04 02	36
GW11 20 03 00	36
GW11 20 04 01	36
GW11 20 04 02	37
GW11 21 03 00	37
GW11 21 04 01	37
GW11 21 04 02	37
GW11 22 03 00	35
GW11 22 04 01	35
GW11 22 04 02	35
GW11 23 03 00 <b>NEW</b>	37
GW11 23 04 01	37
GW11 23 11 00	37
GW11 24 03 00	37
GW11 24 04 01	37
GW11 24 11 00	37
GW11 26 09 00	37
GW11 27 09 00 <b>NEW</b>	37
GW11 28 09 00	38
GW11 29 09 00	38
GW11 30 09 00	38
GW11 31 09 00	38
GW11 32 09 00	38
GW11 33 09 00	38
GW11 34 09 00	38
GW11 35 09 00	38
GW11 36 09 00	38
GW11 37 09 00	39
GW11 38 09 00	38
GW11 39 09 00	38
GW11 40 09 00	38
GW11 41 09 00	39
GW11 42 07 00	39

GW11 43 07 00	39
GW11 44 07 00	39
GW11 47 01 00	39
GW11 48 01 00	39
GW11 49 07 00	39
GW11 50 03 00	39
GW11 51 03 00	39
GW11 52 03 00	39
GW11 53 01 00	40
GW11 54 06 02	40
GW11 58 12 00	40
GW11 59 12 00	40
GW11 60 03 00	34
GW11 60 04 01	34
GW11 61 09 00	38
GW11 62 09 00	38
GW11 63 01 00	39
GW11 64 01 00	39
GW11 65 06 02	40
GW11 66 02 00	40
GW11 69 04 01	40
GW11 70 04 01	40
GW11 71 04 01	40
GW11 72 04 01	40
GW11 77 04 01	39



**Lavaojos y duchas de emergencia** Eye washers &

emergency showers

REF: P.:

GW12 01 03 05	40
GW12 01 04 05	40
GW12 02 03 05	40
GW12 02 04 05	41
GW12 03 03 05	41
GW12 03 04 05	41
GW12 04 03 05	41
GW12 04 04 05	41
GW12 05 03 05	41
GW12 05 04 05	41



**Grifería temporizada** Timed taps

REF: P.:

GW13 01 06 02 <b>NEW</b>	41
GW13 02 06 02 <b>NEW</b>	41
GW13 03 06 02 <b>NEW</b>	41
GW13 04 06 02	42
GW13 05 06 02	42
GW13 06 06 02	42
GW13 07 06 02	42
GW13 08 06 02	42
GW13 09 06 02	42
GW13 10 06 02	41



<b>GW13 11 06 02</b> <b>NEW</b>	41
<b>GW13 12 06 02</b> <b>NEW</b>	41
<b>GW13 13 06 02</b> <b>NEW</b>	42
<b>GW13 14 06 02</b>	42
<b>GW13 15 06 02</b>	42

---



## **Exterminadores de insectos** Insect killers

**REF: P.:**

<b>GW14 01 03 00</b>	42
<b>GW14 02 01 00</b>	42
<b>GW14 03 04 02</b>	42
<b>GW14 04 04 02</b>	42

---

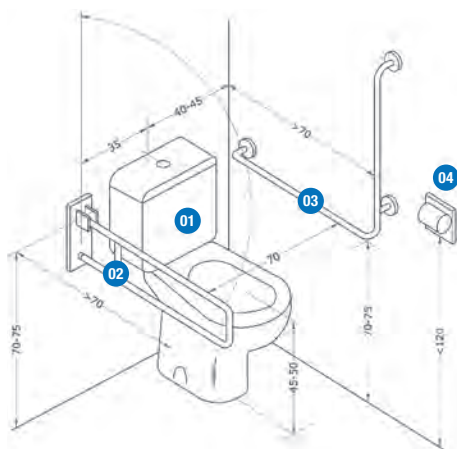


## **Normativa de instalación Installation examples**

**En cumplimiento con Real Decreto 173/2010**

*In accordance with spanish accessibility & disability act 173/2010*

Ejemplos de instalación uno *Installation examples one*



01

**WC ergonómico Ergonomic WC**  
Ref. GW11 42 07 00



01

**Cisterna Cistern**  
Ref. GW11 48 01 00



02

**Barra abatible Folding bar**  
Ref. GW11 07 04 01



03

**Barra ángulo Angled bar**  
Ref. GW11 17 04 01

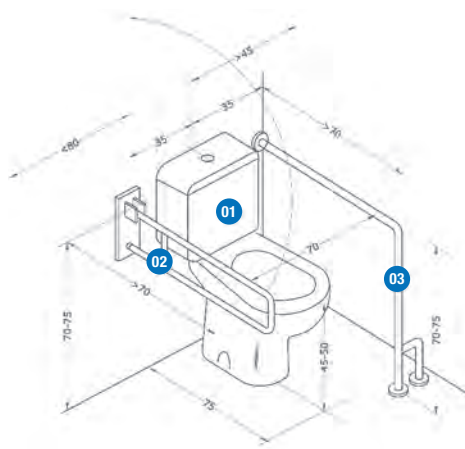


04

**Dispensador de papel**  
Roll paper dispenser  
Ref. GW03 08 04 01



Ejemplos de instalación dos *Installation examples two*



01

**WC ergonómico Ergonomic WC**  
Ref. GW11 42 07 00



01

**Cisterna Cistern**  
Ref. GW11 48 01 00



02

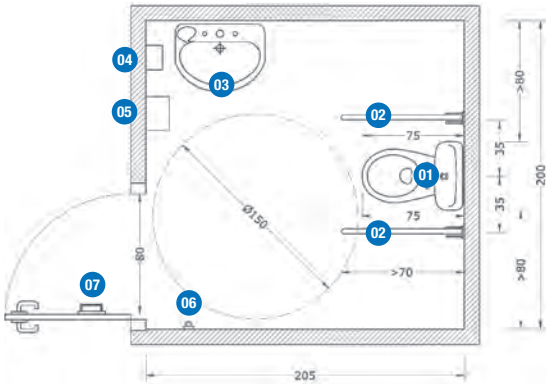
**Barra abatible Folding bar**  
Ref. GW11 07 04 01



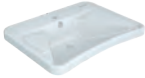
03

**Barra 90° Side bar 90°**  
Ref. GW11 12 04 01





**03**  
**Lavamanos Handwash**  
Ref. GW11 49 07 00



**04**  
**Dosificador Dispenser**  
Ref. GW04 20 04 01



**05**  
**Secamanos Hand dryers**  
Ref. GW01 14 04 01



**06**  
**Percha Hanger**  
Ref. GW05 01 04 01



**07**  
**Manillón Angled Grab bar**  
Ref. GW11 22 04 01

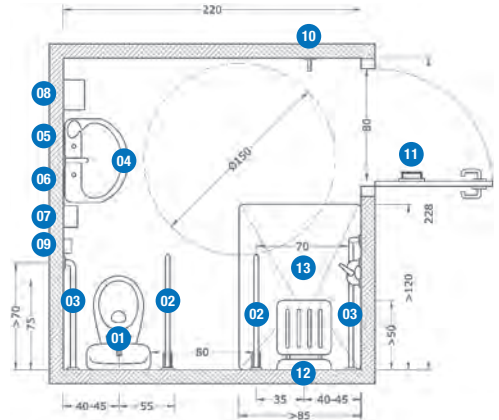


**01**  
**WC ergonómico Ergonomic WC**  
Ref. GW11 42 07 00



**02**  
**Barra abatible Folding bar**  
Ref. GW11 07 04 01





01

**WC ergonómico Ergonomic WC**  
Ref. GW11 42 07 00



02

**Barra abatible Folding bar**  
Ref. GW11 07 04 01



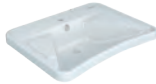
03

**Barra ángulo Angled bar**  
Ref. GW11 17 04 01



04

**Lavamanos Handwash**  
Ref. GW11 49 07 00



05

**Grifo Tap**  
Ref. GW11 54 06 02



06

**Espejo Mirror**  
Ref. GW11 66 02 00



07

**Dosificador Dispenser**  
Ref. GW04 20 04 01



08

**Secamanos Hand dryers**  
Ref. GW01 14 04 01



09

**Dispensador de papel  
Roll paper dispenser**  
Ref. GW03 08 04 01



10

**Percha Hanger**  
Ref. GW05 01 04 01



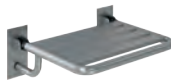
11

**Manillón Angled Grab bar**  
Ref. GW11 22 04 01



12

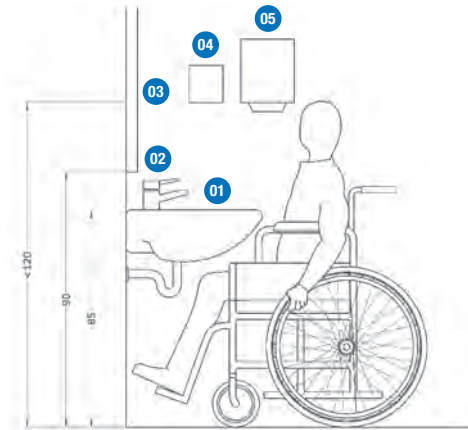
**Asiento Seat**  
Ref. GW11 23 04 01



13

**Plato de ducha Shower pan**  
Ref. GW11 23 04 01





01

**Lavamanos Handwash**  
Ref. GW11 49 07 00



02

**Grifo Tap**  
Ref. GW11 54 06 02



03

**Espejo Mirror**  
Ref. GW11 66 02 00



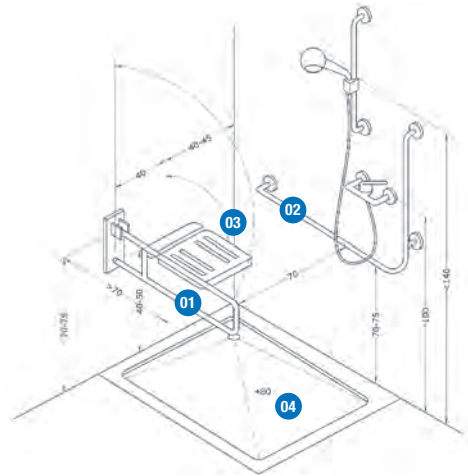
07

**Dosificador Dispenser**  
Ref. GW04 20 04 01



05

**Secamanos Hand dryers**  
Ref. GW01 14 04 01



01

**Barra abatible Folding bar**  
Ref. GW11 07 04 01



02

**Barra ángulo Angled bar**  
Ref. GW11 17 04 01



03

**Asiento Seat**  
Ref. GW11 23 04 01



04

**Plato de ducha Shower pan**  
Ref. GW11 23 04 01





**\*Productos a evitar para un óptimo mantenimiento del acero inoxidable**  
**\*Products to avoid for optimal maintenance of stainless steel**

## Limpeza y mantenimiento del acero inoxidable *Stainless steel maintenance and cleaning*

El acero inoxidable es un acero bajo en carbono y con un mínimo de contenido del 10% de cromo. El cromo da al acero propiedades únicas en cuanto a anti-corrosión frente a la mayoría de productos químicos.

A pesar de ser muy resistente a la corrosión, el mantenimiento incorrecto del acero inoxidable puede oxidarlo o decolorarlo. Es muy importante una limpieza regular con jabón no agresivo y agua, mediante el uso de un paño de algodón.

*Stainless steel is a low carbon steel that contains at least 10% chromium. Chromium gives the steel its unique anti-corrosion properties.*

*Despite its corrosion resistance, the incorrect maintenance of stainless steel can cause corrosion and discoloration. A frequent cleaning with mild soap and water with a cotton cloth is required.*

### Los productos que acabarán por corroer al acero inoxidable son los siguientes

The following is a list of products that can eventually cause corrosion or discoloration of stainless steel

---

Las lejías y productos de limpieza a base de hipoclorito *Chloride containing cleansers: This includes all products which contain a certain amount of bleach*

---

Ácido muriático *Muriatic acid*

---

Jabones concentrados *Concentrated soap residue*

---

Agua con contenido alto en hierro *Water with high iron content*

---

Contacto con materiales de hierro *Contact with iron materials*

---

Ácidos, desinfectantes concentrados, cloro y álcalis fuertes (sosa cáustica) *Acids, concentrated disinfectants, chlorine and strong alkaline products*

---

Muchas decoloraciones del acero inoxidable pueden ser eliminadas mediante el uso de jabones no agresivos o productos especiales para la limpieza del acero inoxidable. Sin embargo, el mantenimiento correcto del acero inoxidable garantiza la apariencia original.

*Most discolorations can be removed by using mild soap or products specially designed for stainless steel cleaning. However, the correct maintenance and cleaning, guarantees the original appearance indefinitely.*





## Condiciones generales de venta *General sales conditions*

### Condiciones de pago

En aplicación de la Ley 15/2010 que limita los plazos máximos de pago en las operaciones comerciales, hemos ajustado las condiciones a los dispuestos en la misma. En caso de diferirse el pago, los gastos de negociación de efectos y/o los intereses legales especificados serán a cargo del comprador. El impago de cualquier efecto o recibo, conllevará la inmediata suspensión de suministros y servicios.

### Payment terms

We have adjusted the conditions in application of Law 15/2010 which limits the maximum terms of payment in commercial transactions. The maximum delay on payment will be 60 days after invoice date. Payment term will be agreed between the parties. In case of unpaid, the expenses and interests incurred will be paid by the purchaser. The unpaid maturity will imply the complete suspension of any service or supply.

### Pedidos

Los pedidos deberán formalizarse mediante documento escrito. Cada pedido solicitado será confirmado por Genwec via email/fax. Salvo notificación de lo contrario en las siguientes 24h, el pedido seguirá su curso sin derecho a posteriores reclamaciones.

### Orders

Regarding the handling of any supply, it is compulsory for the purchaser to send a written signed and sealed purchasing order indicating clearly GENWEC's reference, including measurements digits and also the quantity required according to obligated minimum units of purchase (boxes). In case of discrepancies, GENWEC has the right to accept or cancel the pending orders. All the orders will be confirmed by GENWEC by e-mail/fax. Each confirmed order will be handled with no right from the purchaser to modify it, unless previous notification 24 hours after confirmation.

### Tarifa de precios

Genwec comunicará a sus clientes cualquier cambio que se produzca en las tarifas a través de alguna de las vías de comunicación usuales (web, email, correo).

---

### Expediciones

Todo pedido superior a 250 euros en Península se suministrará a portes pagados. Para Canarias, Ceuta, Melilla, Baleares y Andorra consultar condiciones.

---

### Reclamaciones y devoluciones

Las eventuales reclamaciones deben efectuarse dentro de los 15 días desde su entrega. No se aceptará ninguna devolución de material sin aprobación previa de nuestro Departamento Comercial que facilitará un número de boletín de devolución que debe acompañar al material devuelto. Todas las devoluciones serán con los portes a cargo del comprador. Y se realizará un cargo por demérito del 10% del valor de la mercancía.

No se aceptará devoluciones de producto personalizado, a medida o fuera de catálogo.

Las devoluciones deberán llevar su embalaje original, sin anotaciones ni etiquetas y con los accesorios de instalación completos.

---

### Garantía

Queda limitada a la legislación vigente. Salvo en aquellos productos que, por cortesía de Genwec; se hayan establecido unos plazos superiores. Para estos casos será necesario haber cumplimentado el formulario que se adjunta en la página web.

---

### Catálogo y tarifa

El catálogo y tarifa entran en vigor el 1 de abril de 2022. Genwec Washroom S.L. por motivos de política de mejora de sus productos, se reserva el derecho a modificar las características, especificaciones y precios en cualquier momento.

Genwec Washroom S.L. pone a su disposición la información técnica actualizada de todos sus productos en su página web [www.genwec.com](http://www.genwec.com)

---

### Jurisdicción

Serán únicamente competentes en caso de litigio, los tribunales de la provincia de Barcelona.

### Price list

GENWEC will inform the customers about any change in the price list, through normal communication means (web, e-mail or post).

---

### Product withdrawal from catalogue

GENWEC will inform the customers about any product withdrawal from the catalogue.

---

### Shipment, delivery and claims

Goods are shipped under the purchaser's own risk, even in special cases. Orders will always be shipped in full boxes.

Any claim must be made within 15 days after date of reception of the goods by the purchaser. Claims after such period will not be considered.

No returned will be accepted without the previous approval from our sales department, who will issue a return certificate that must be included in the returned goods. All returned freight will be paid by the purchaser.

---

### Guarantee

It is limited to defective pieces replacement identified by GENWEC Quality department. We will not accept any return after 15 days from the date of reception by the purchaser.

---

### Catalogue and price list

The catalogue and price list come into force on April 1, 2021. GENWEC WASHROOM S. L. for reasons of policy to improve their Products, reserves the right to modify features, specifications and prices at any time. GENWEC WASHROOM S. L. offers updated technical information on all their products on their website [www.genwec.com](http://www.genwec.com)

---

### Property of the goods

GENWEC has the property right of the supplied goods, until the purchaser has totally paid its value. In the meantime, it will be considered as deposit and custody. Goods shall be claimed in case of breach of payment terms.

**GENWEC<sup>®</sup>**  
WASHROOM EQUIPMENT & COMP.

**GENWEC**<sup>®</sup>  
WASHROOM EQUIPMENT & COMP.

Av. Joan Carles I, 46-48  
08908 L'Hospitalet de Llobregat, Barcelona (Spain)  
T. +34 936 018 040 - F. +34 936 018 041  
comercial@genwec.com - export@genwec.com  
www.genwec.com

